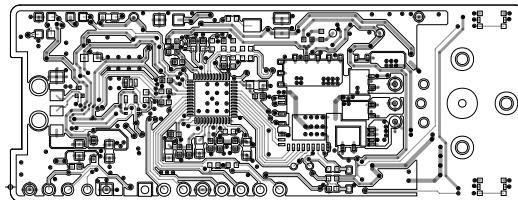


ART FILM - TOP



Infineon Technologies AG  
Am Campeon 1-15  
85579 NEUBIBERG - GERMANY

PROJECT: KIT PSC3M5 2G0

DRAWN BY: PRAO

LAYER: TOP SIDE

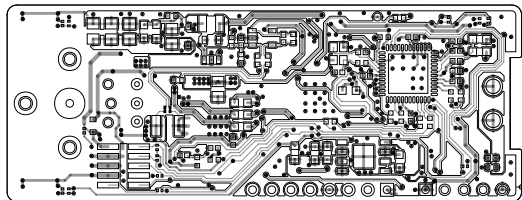
DWG NO: 600-60706-01

REV: 02

DATE: 09/11/2024

ART FILM - TOP

# ART FILM - BOTTOM



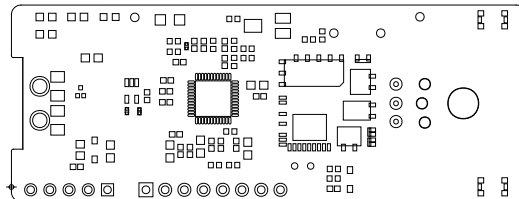
PROJECT: KIT P5C3M2 SGO	
DRAWN BY: PRAO	
LAYER: BOTTOM SIDE	
DWG NO: 600-60706-01	REV: S0
DATE: 09/11/2024	

**Infineon**

Infineon Technologies AG  
Am Campeon 1-12  
85276 NEUBIBERG - GERMANY

# ART FILM - BOTTOM

ART FILM - smt

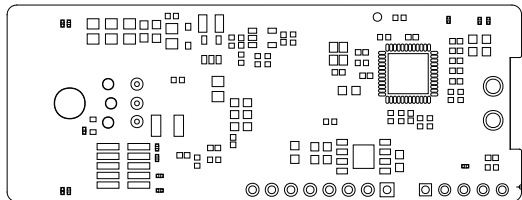


Infineon Technologies AG  
Am Campeon 1-15  
85579 NEUBIBERG - GERMANY

PROJECT:	KIT PSC3M5 2G0		
DRAWN BY:	PRAO		
LAYER:	SOLDERMASK TOP		
DWG NO:	600-60706-01	REV: 02	DATE: 09/11/2024

ART FILM - smt

ART FILM - smb



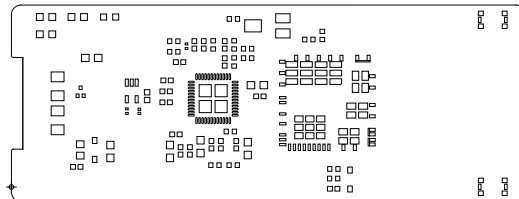
PROJECT: KIT P5C3M2 SGO	
DRAWN BY: PRAO	
LAYER: SOLDERMASK BOTTOM	
DWG NO: 600-60706-01	REV: 05
DATE: 09/11/2024	

**Infineon**

Infineon Technologies AG  
 Am Campeon 1-12  
 85276 NEUBIBERG - GERMANY

ART FILM - smb

ART FILM - spt

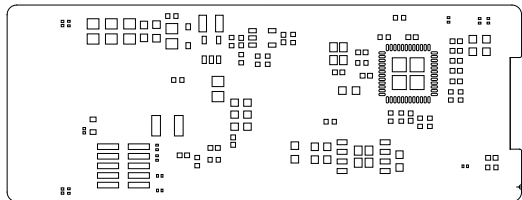


Infineon Technologies AG  
Am Campeon 1-15  
85579 NEUBIBERG - GERMANY

PROJECT:	KIT PSC3M5 2GO		
DRAWN BY:	PRAO		
LAYER:	SOLDERPASTE TOP		
DWG NO:	600-60706-01	REV: 02	DATE: 09/11/2024

ART FILM - spt

ART FILM - spb

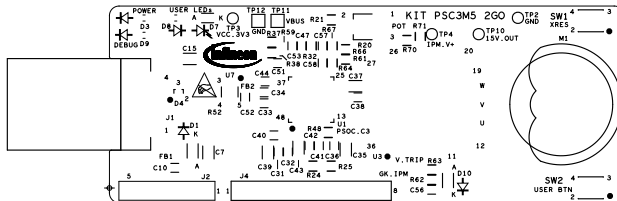


PROJECT: KIT PSCM2 SGO	
DRAWN BY: PRAO	
LAYER: SOLDERPASTE BOTTOM	
DWG NO: 600-60706-01	REV: 05
DATE: 09/11/2004	4S0S\111\00

Infineon Technologies AG  
 Am Campeon 1-12  
 85276 NEUBIBERG - GERMANY

ART FILM - spb

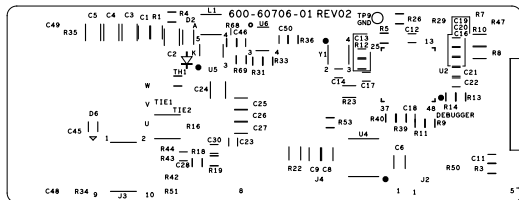
ART FILM - sst



Infineon Technologies AG  
Am Campeon 1-15  
85579 NEUBIBERG - GERMANY

PROJECT:	KIT PSC3M5 2G0		
DRAWN BY:	PRAO		
LAYER:	SILKSCREEN TOP		
DWG NO:	600-60706-01	REV: 02	DATE: 09/11/2024

ART FILM - sst



PROJECT: KIT PSCM2 SGO		DRAWN BY: PRAO	
LAYER: SILKSCREEN BOTTOM		DWG NO: 600-60706-01	
DATE: 09/11/2024	REV: 05		



Infineon Technologies AG  
 A Company of  
 82528 NEUBERG - GERMANY