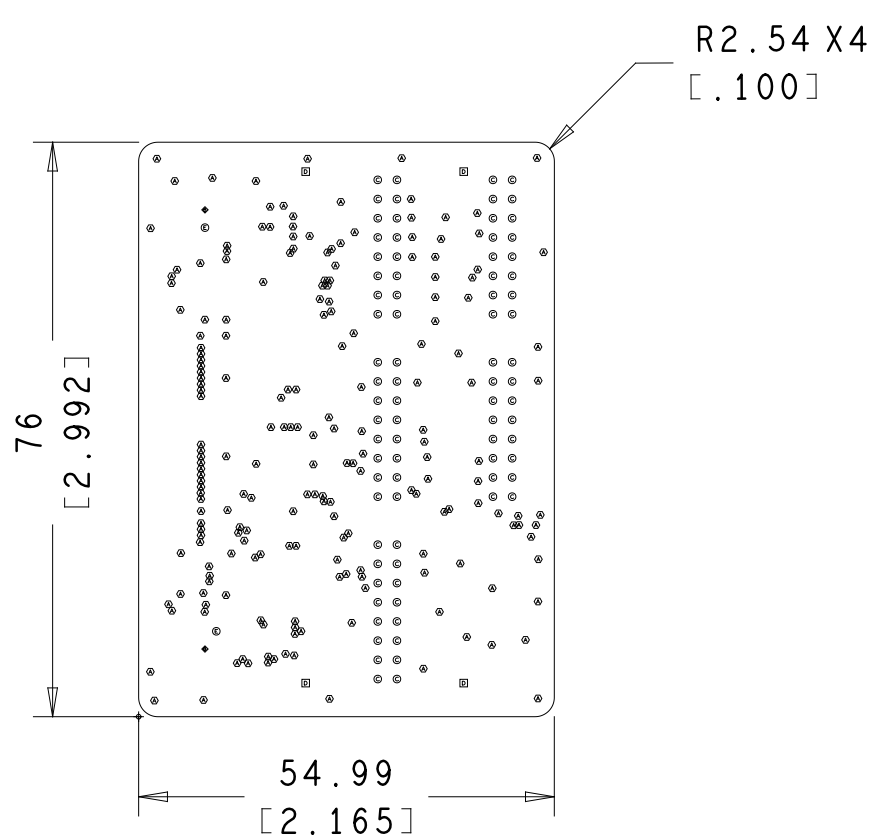


ANY PISH - detail12

ANY PISH - detail12



UNITS ARE IN MM [INCH]

DRILL CHART: TOP to BOTTOM						
ALL UNITS ARE IN MILS						
FIGURE	FINISHED_SIZE	DRILLED_SIZE	FINISHED_TOL	DRILLED_TOL	PLATED	QTY
*	10.0	-	+3.0/-3.0	-	PLATED	200
*	33.07	-	+3.0/-3.0	-	PLATED	2
*	39.76	-	+3.0/-3.0	-	PLATED	80
=	62.99	-	+3.0/-3.0	-	PLATED	4
*	50.0	-	+2.0/-2.0	-	NON-PLATED	2

THE INFORMATION CONTAINED HEREIN IS CONFIDENTIAL AND PROPRIETARY TO Infineon technologies AG AND SHALL NOT BE REPRODUCED OR DISCLOSED IN WHOLE OR IN PART OR USED FOR ANY DESIGN, MANUFACTURE, OR OTHERWISE, EXCEPT WHEN SUCH USER POSSESSES DIRECT, WRITTEN AUTHORIZATION.				SIZE	CAGE CODE	CY P/N	REV	
				D	-	610-60702-01	2	03
				SCALE	SHEET			
				1/1				

COMPUTER GENERATED DRAWING
DO NOT CHANGE MANUALLY

ALLEGRO FILE: 600-60702-01_03.BRD