

EVAL-M1-IR2214 User Guide

1200 V junction-isolation gate driver IR2214SS evaluation board

About this document

Scope and purpose

This user guide provides an overview of the evaluation board EVAL-M1-IR2214 including its main features, key components and design details. The user guide describes how to run a brushless direct current (BLDC) motor with the evaluation board, and verifies the board by a double-pulse test for a higher power rating.

Intended audience

This document is intended for all technical specialists who have a knowledge of motor control and high-power electronics converters. The board should be used under laboratory conditions.

Evaluation board

The board EVAL-M1-IR2214 is designed to evaluate the 1200 V junction-isolation gate driver IR2214SS along with the 1200 V/50 A EconoPIM™3 module FP50R12KT4G.

This board will be used during design-in, for evaluation and measurement of characteristics, and proof of data sheet specifications.

Note: PCB and auxiliary circuits are NOT optimized for final customer design.

Ordering information

Base part number	Package	Standard pack		Orderable part number
		Form	Quantity	
EVAL-M1-IR2214	MADK EVAL	Boxed	1	EVALM1IR2214TOBO1
IR2214SS	SSOP24	Tape & Reel	2000	IR2214SSTRPBF
EVAL-M1-101T	MADK EVAL	Container	1	EVALM1101TTOBO2
FP50R12KT4G	AG-ECONO3	Tray	10	FP50R12KT4GBOSA1
ICE5QSAG	PG-DSO-8	Tape & Reel	2500	ICE5QSAGXUMA1
IMBF170R1K0M1	PG-TO263-7	Tape & Reel	1000	IMBF170R1K0M1XTMA1
IFX25001TF V50	PG-TO252-3	Tape & Reel	2500	IFX25001TFV50ATMA1

Important notice

Important notice

“Evaluation Boards and Reference Boards” shall mean products embedded on a printed circuit board (PCB) for demonstration and/or evaluation purposes, which include, without limitation, demonstration, reference and evaluation boards, kits and design (collectively referred to as “Reference Board”).

Environmental conditions have been considered in the design of the Evaluation Boards and Reference Boards provided by Infineon Technologies. The design of the Evaluation Boards and Reference Boards has been tested by Infineon Technologies only as described in this document. The design is not qualified in terms of safety requirements, manufacturing and operation over the entire operating temperature range or lifetime.

The Evaluation Boards and Reference Boards provided by Infineon Technologies are subject to functional testing only under typical load conditions. Evaluation Boards and Reference Boards are not subject to the same procedures as regular products regarding returned material analysis (RMA), process change notification (PCN) and product discontinuation (PD).

Evaluation Boards and Reference Boards are not commercialized products, and are solely intended for evaluation and testing purposes. In particular, they shall not be used for reliability testing or production. The Evaluation Boards and Reference Boards may therefore not comply with CE or similar standards (including but not limited to the EMC Directive 2004/EC/108 and the EMC Act) and may not fulfill other requirements of the country in which they are operated by the customer. The customer shall ensure that all Evaluation Boards and Reference Boards will be handled in a way which is compliant with the relevant requirements and standards of the country in which they are operated.

The Evaluation Boards and Reference Boards as well as the information provided in this document are addressed only to qualified and skilled technical staff, for laboratory usage, and shall be used and managed according to the terms and conditions set forth in this document and in other related documentation supplied with the respective Evaluation Board or Reference Board.

It is the responsibility of the customer’s technical departments to evaluate the suitability of the Evaluation Boards and Reference Boards for the intended application, and to evaluate the completeness and correctness of the information provided in this document with respect to such application.

The customer is obliged to ensure that the use of the Evaluation Boards and Reference Boards does not cause any harm to persons or third party property.

The Evaluation Boards and Reference Boards and any information in this document is provided "as is" and Infineon Technologies disclaims any warranties, express or implied, including but not limited to warranties of non-infringement of third party rights and implied warranties of fitness for any purpose, or for merchantability.

Infineon Technologies shall not be responsible for any damages resulting from the use of the Evaluation Boards and Reference Boards and/or from any information provided in this document. The customer is obliged to defend, indemnify and hold Infineon Technologies harmless from and against any claims or damages arising out of or resulting from any use thereof.

Infineon Technologies reserves the right to modify this document and/or any information provided herein at any time without further notice.

Safety precautions

Safety precautions

Note: Please note the following warnings regarding the hazards associated with development systems.

Table 1 Safety precautions

	Warning: The DC link potential of this board is up to 800 VDC. When measuring voltage waveforms by oscilloscope, high voltage differential probes must be used. Failure to do so may result in personal injury or death.
	Warning: The evaluation or reference board contains DC bus capacitors which take time to discharge after removal of the main supply. Before working on the drive system, wait five minutes for capacitors to discharge to safe voltage levels. Failure to do so may result in personal injury or death. Darkened display LEDs are not an indication that capacitors have discharged to safe voltage levels.
	Warning: The evaluation or reference board is connected to the grid input during testing. Hence, high-voltage differential probes must be used when measuring voltage waveforms by oscilloscope. Failure to do so may result in personal injury or death. Darkened display LEDs are not an indication that capacitors have discharged to safe voltage levels.
	Warning: Remove or disconnect power from the drive before you disconnect or reconnect wires, or perform maintenance work. Wait five minutes after removing power to discharge the bus capacitors. Do not attempt to service the drive until the bus capacitors have discharged to zero. Failure to do so may result in personal injury or death.
	Caution: The heat sink and device surfaces of the evaluation or reference board may become hot during testing. Hence, necessary precautions are required while handling the board. Failure to comply may cause injury.
	Caution: Only personnel familiar with the drive, power electronics and associated machinery should plan, install, commission and subsequently service the system. Failure to comply may result in personal injury and/or equipment damage.
	Caution: The evaluation or reference board contains parts and assemblies sensitive to electrostatic discharge (ESD). Electrostatic control precautions are required when installing, testing, servicing or repairing the assembly. Component damage may result if ESD control procedures are not followed. If you are not familiar with electrostatic control procedures, refer to the applicable ESD protection handbooks and guidelines.
	Caution: A drive that is incorrectly applied or installed can lead to component damage or reduction in product lifetime. Wiring or application errors such as undersizing the motor, supplying an incorrect or inadequate AC supply, or excessive ambient temperatures may result in system malfunction.
	Caution: The evaluation or reference board is shipped with packing materials that need to be removed prior to installation. Failure to remove all packing materials that are unnecessary for system installation may result in overheating or abnormal operating conditions.

Table of contents

About this document.....	1
Important notice	2
Safety precautions.....	3
Table of contents.....	4
1 The board at a glance.....	5
1.1 Delivery content	5
1.2 Block diagram.....	5
1.3 Main features	6
1.4 Board parameters and technical data.....	7
2 System and functional description	8
2.1 Commissioning.....	8
2.1.1 Running a BLDC motor.....	8
2.1.2 Double-pulse test	8
2.2 Description of the functional blocks.....	10
2.2.1 Inrush current limitation.....	10
2.2.2 DC-link voltage measurement	10
2.2.3 EconoPIM™3 FP50R12KT4G.....	11
2.2.4 Drive circuit with the IR2214SS.....	11
2.2.5 Current feedback.....	12
2.2.6 NTC-thermistor configuration	13
2.2.7 Auxiliary power supply.....	13
2.3 iMOTION™ development tool and software.....	14
2.3.1 MCEWizard setup.....	14
2.3.2 MCEDesigner setup	17
3 System design.....	18
3.1 Schematics	18
3.2 Layout	19
3.2.1 Layout details	19
3.2.2 Layout guidelines	20
3.3 Bill of material	21
3.4 Connector details	21
4 System performance	22
4.1 Test results running a BLDC motor.....	22
4.2 Test results of the double-pulse test	25
5 References and appendices	26
5.1 Abbreviations and definitions.....	26
5.2 References	26
Revision history.....	27

The board at a glance

1 The board at a glance

The evaluation board EVAL-M1-IR2214 contains the gate driver ICs IR2214SS, the EconoPIM™3 module FP50R12KT4G, the bus capacitors and peripheral circuits.

1.1 Delivery content

The complete board EVAL-M1-IR2214 is delivered with daughter board for auxiliary power supplies included.

1.2 Block diagram

Figure 1 shows a typical application diagram of the EVAL-M1-IR2214 for driving a BLDC motor. All the power circuits are included in the EVAL-M1-IR2214. The rectifier, brake and inverter are combined in the power integration module (PIM) FP50R12KT4G. The daughter board provides the power supplies for both gate drivers and controller board.

The system adopts the single-shunt configuration, which is prevalent for current BLDC motor drive applications.

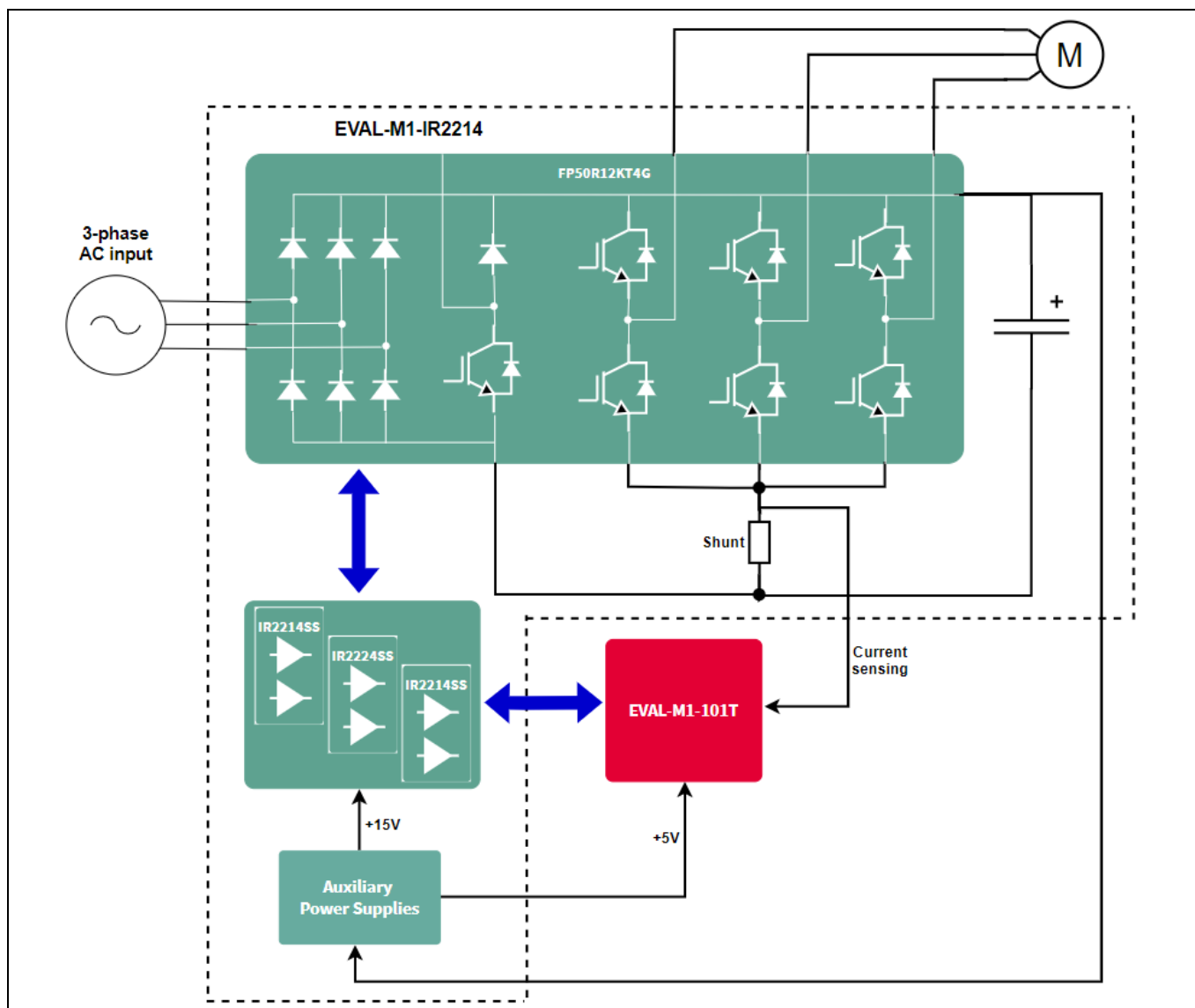


Figure 1 Typical application block diagram of the EVAL-M1-IR2214

The board at a glance

The functional blocks of the EVAL-M1-IR2214 are presented in Figure 2 and Figure 3.

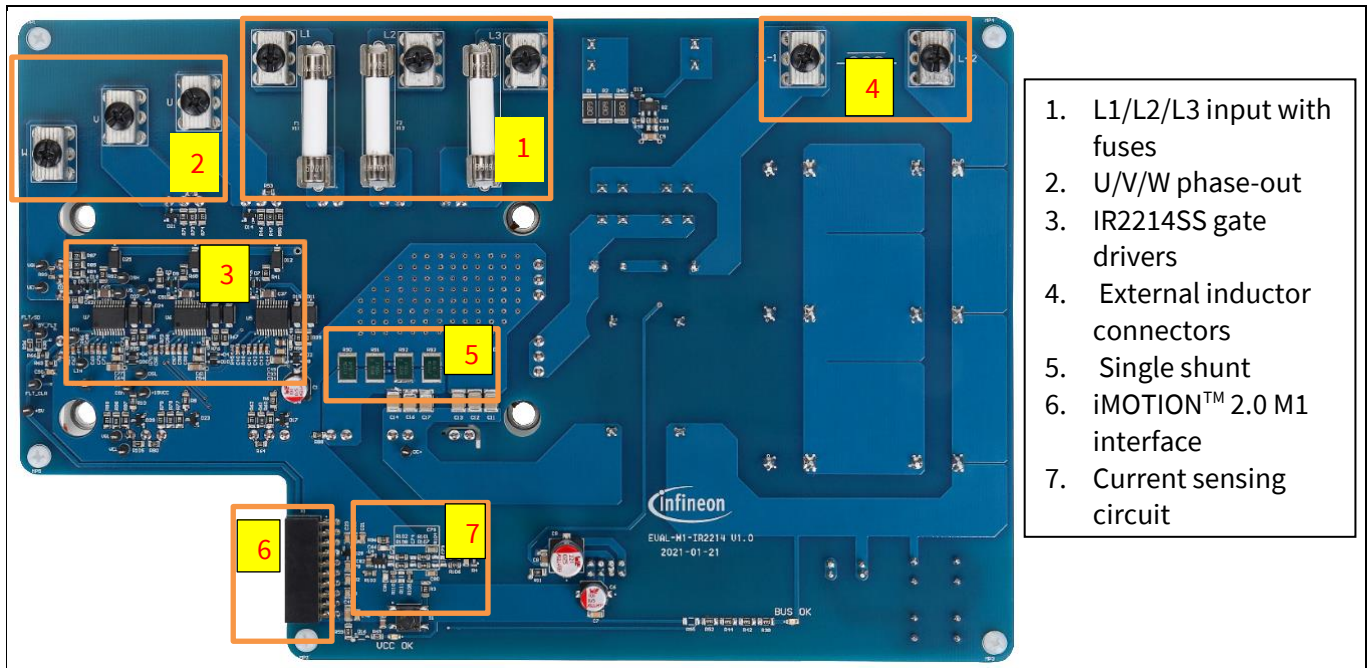


Figure 2 Functional blocks of the EVAL-M1-IR2214 – top view

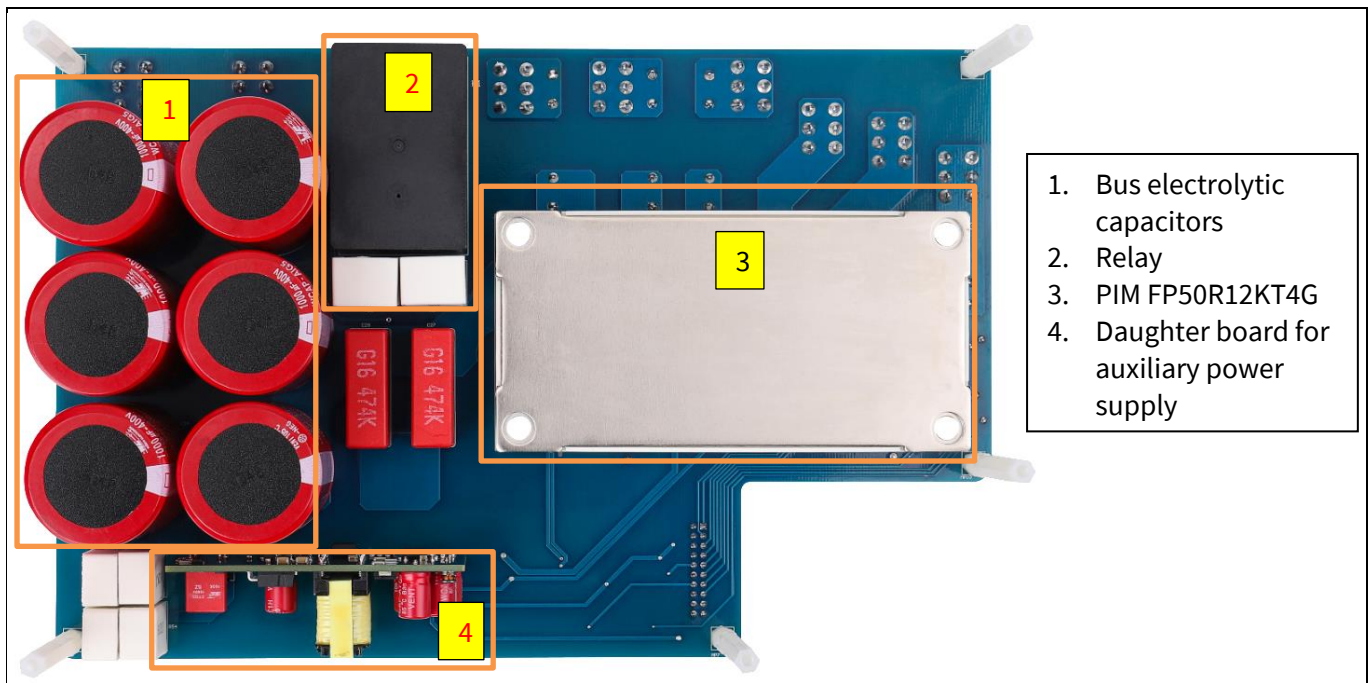


Figure 3 Functional blocks of the EVAL-M1-IR2214 – bottom view

1.3 Main features

Main features of the EVAL-M1-IR2214 include:

- 380 V_{AC} three-phase input with fuses on the board providing basic electrical protection
- Inrush current limit circuit included for a safer power-on

The board at a glance

- Compact design with the EconoPIM™3 FP50R12KT4G which combines the rectifier, brake and inverter in one package
- Optimized system performance with the IR2214SS which includes enhanced features, such as desaturation protection, soft overcurrent shutdown, two-stage turn-on output, separate sink/source output, etc.
- +15 V and +5 V auxiliary power supplies on the board
- M1 interface compatible with the iMOTION™ controller board

1.4 Board parameters and technical data

The key specifications of the EVAL-M1-IR2214 are listed in Table 2.

Table 2 EVAL-M1-IR2214 board specification

Parameter	Symbol	Conditions	Value			Unit
			min	nom	max	
Input						
Input voltage	V _{IN}	Line voltage, three-phase input			480	V _{AC}
Input current	I _{IN}	Phase current			15	A
Output						
Output current	I _{OUT}	RMS phase-out current			23	A
Output power	P _{OUT}	With adequate cooling method			10	kW
Over-current protection		Peak phase-out current defined in MCEWizard			50	A
Thermal protection						
NTC over-temperature threshold	VTH	Configuration in MCEWizard	1.84	4.14		V
			100	25		°C
Switching frequency						
Inverter frequency	F _{SW}			8		kHz
Auxiliary power supply						
Gate driver power supply	VCC			15		V
Controller power supply				5		V
System environment						
Ambient temperature		With adequate cooling method		25		°C
PCB characteristics						
Dimensions		Length		245		mm
		Width		160		mm
		Height		65		mm
Layer				2		
PCB thickness				2		mm
Copper thickness				2		oz.
Weight		Weight of the entire PCB assembly		1240		g
Material		FR-4, RoHS-compliant				

2 System and functional description

2.1 Commissioning

2.1.1 Running a BLDC motor

By connecting the iMOTION™2.0 controller board EVAL-M1-101T through an M1 interface, the power board EVAL-M1-IR2214 can run a BLDC motor. The system connection is shown in Figure 4, and the test results are recorded in section 4.1.

Caution: The required, adequate cooling method should be used to prevent the PIM from overheating, since it is not provided in the scope of delivery.

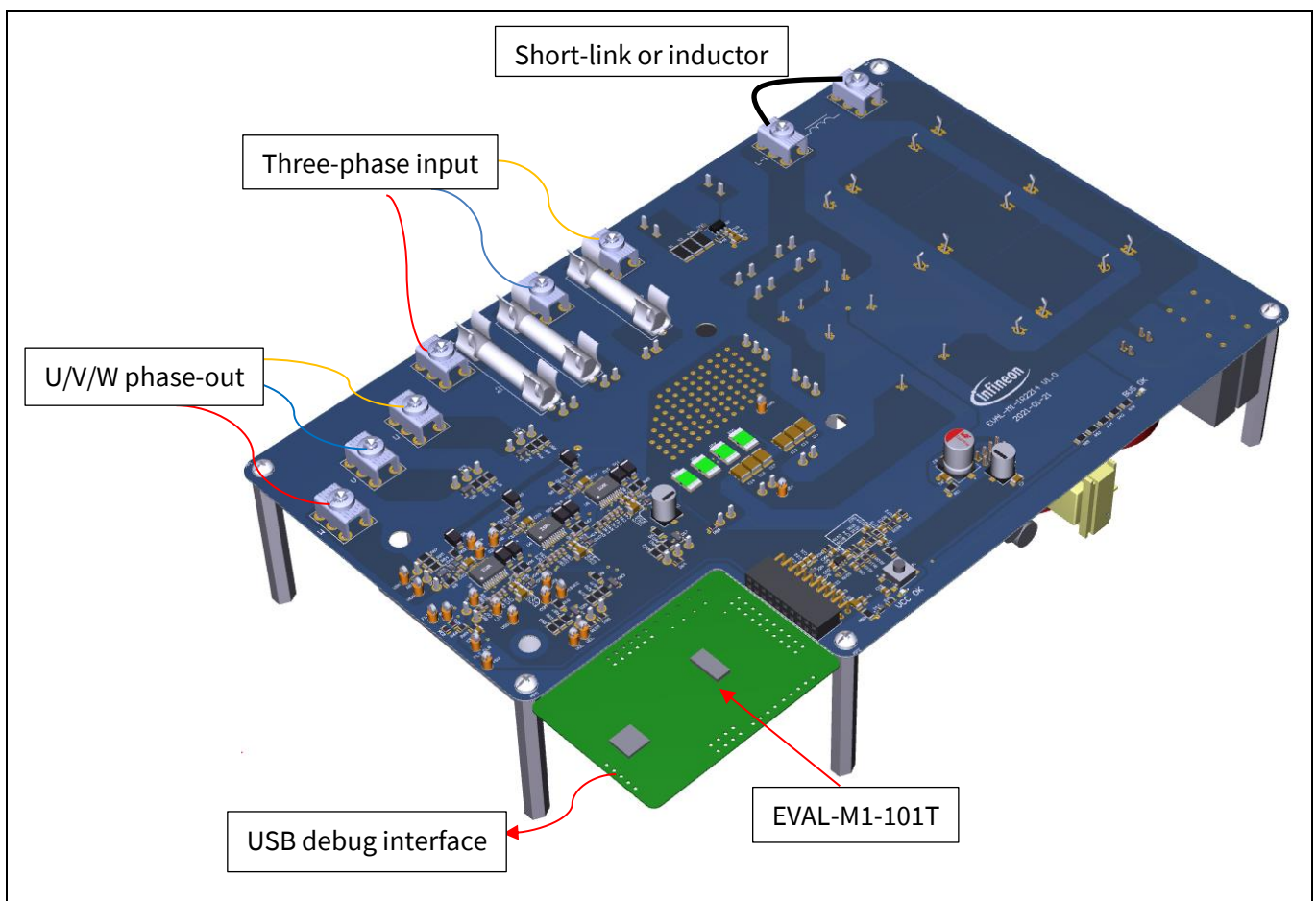


Figure 4 The system connection for running a BLDC motor

2.1.2 Double-pulse test

The double-pulse test is applied to check the robustness of the gate driver IR2214SS under extreme working conditions. Some critical data such as negative V_S and V_{SS} transient should be checked whether they are still within the specification. The worst condition occurs when the double-pulse test is performed on the high-side switch. The test method is illustrated in Figure 5.

Note: The cooling method is not needed for double-pulse test.

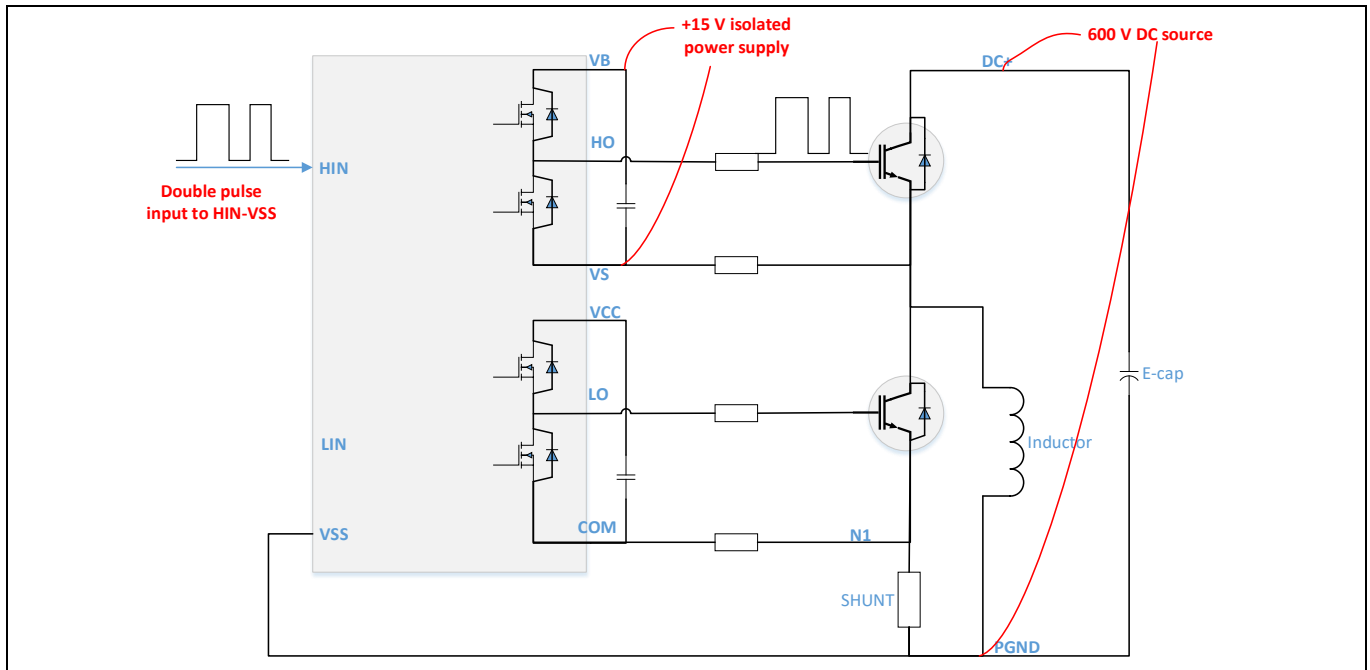


Figure 5 Double-pulse test on the high-side switch

A DC source is used to charge the bus electrolytic capacitors. The positive output of the DC source is connected to the 'DC+' test point, whereas the negative output to the power ground 'PGND' test point on the EVAL-M1-IR2214 board. The double-pulse test is taken on the W-phase since it has the largest ground loop. The test setup is shown in Figure 6, and the test results including the minus V_s are offered in section 0.

Caution: 1. Check the connections according to the right polarities of the DC source.

2. The bus voltage should gradually rise if the DC source has no inrush current limitation.

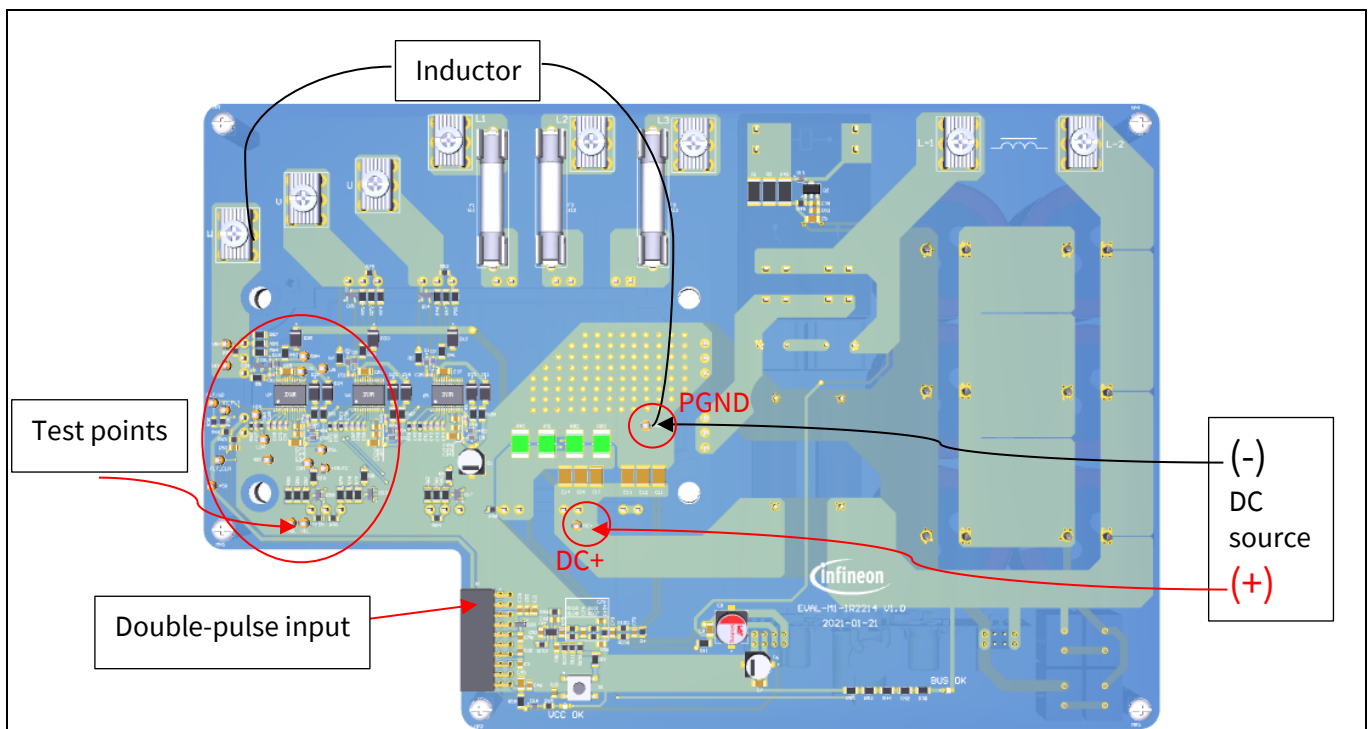


Figure 6 Double-pulse test system setup

2.2 Description of the functional blocks

This chapter covers the hardware design of the EVAL-M1-IR2214 in detail. The users can modify the circuit or re-select the component values based on the actual applications in the field.

2.2.1 Inrush current limitation

To protect input fuses, rectifier and bus capacitors from large inrush current during power-on, the inrush current limitation circuit is usually needed, see Figure 7.

At the beginning of power-on, the relay is open and the bus capacitors are charged through R56 and R57. When the +15 V power supply is established (after around 100 mS), the relay is closed to take over the charge current.

The R1, R2 and R40 are used to regulate the +15 V to +12 V, with which the relay works.

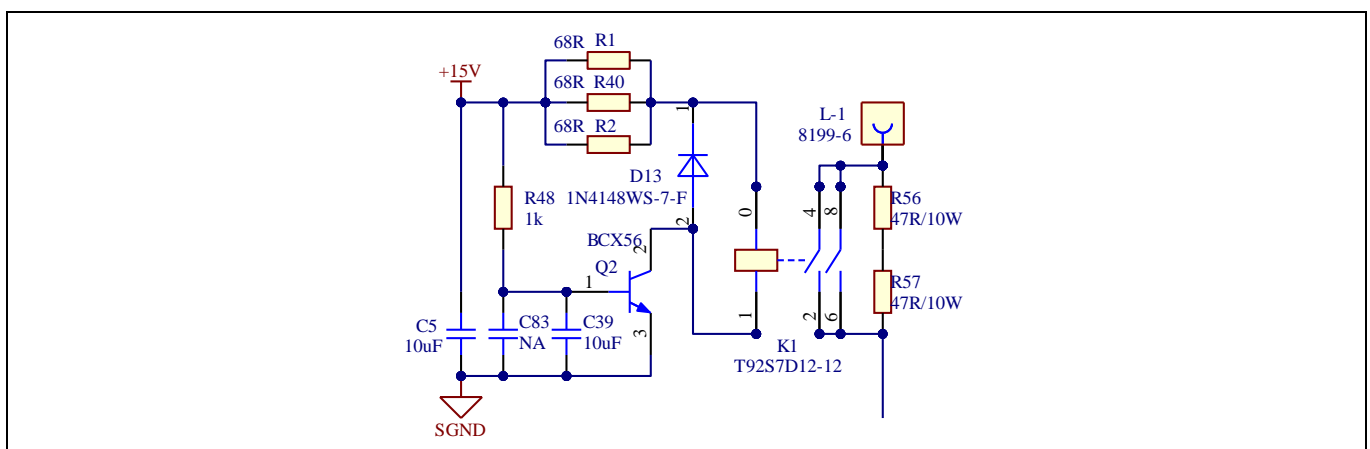


Figure 7 Inrush current limitation circuit

2.2.2 DC-link voltage measurement

The bus capacitors should be large enough to stabilize the bus voltage. The resistors R37, R43, R51 and R54 are used for balancing the voltage on the electrolytic capacitors in series, see Figure 8.

Note: The resistor R55 is not soldered on the EVAL-M1-IR2214 main board. There is a 13.3 kΩ pull-down resistor located on the EVAL-M1-101T controller board.

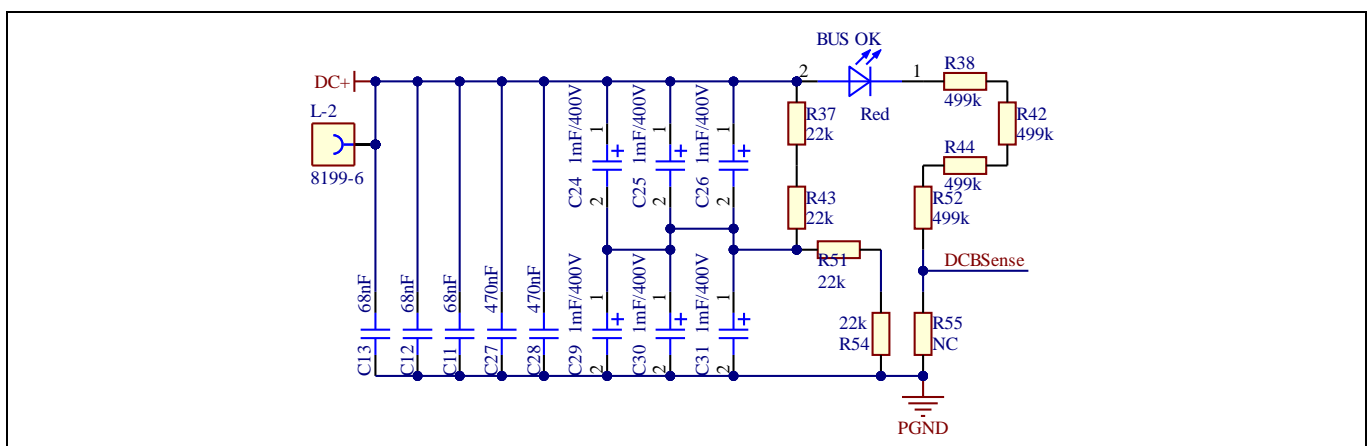


Figure 8 Bus capacitor configuration and DC bus sensing

2.2.3 EconoPIM™3 FP50R12KT4G

The EconoPIM™3 FP50R12KT4G combines the three-phase rectifier, brake, inverter and NTC function blocks in one package. The internal structure of the FP50R12KT4G is shown in Figure 9.

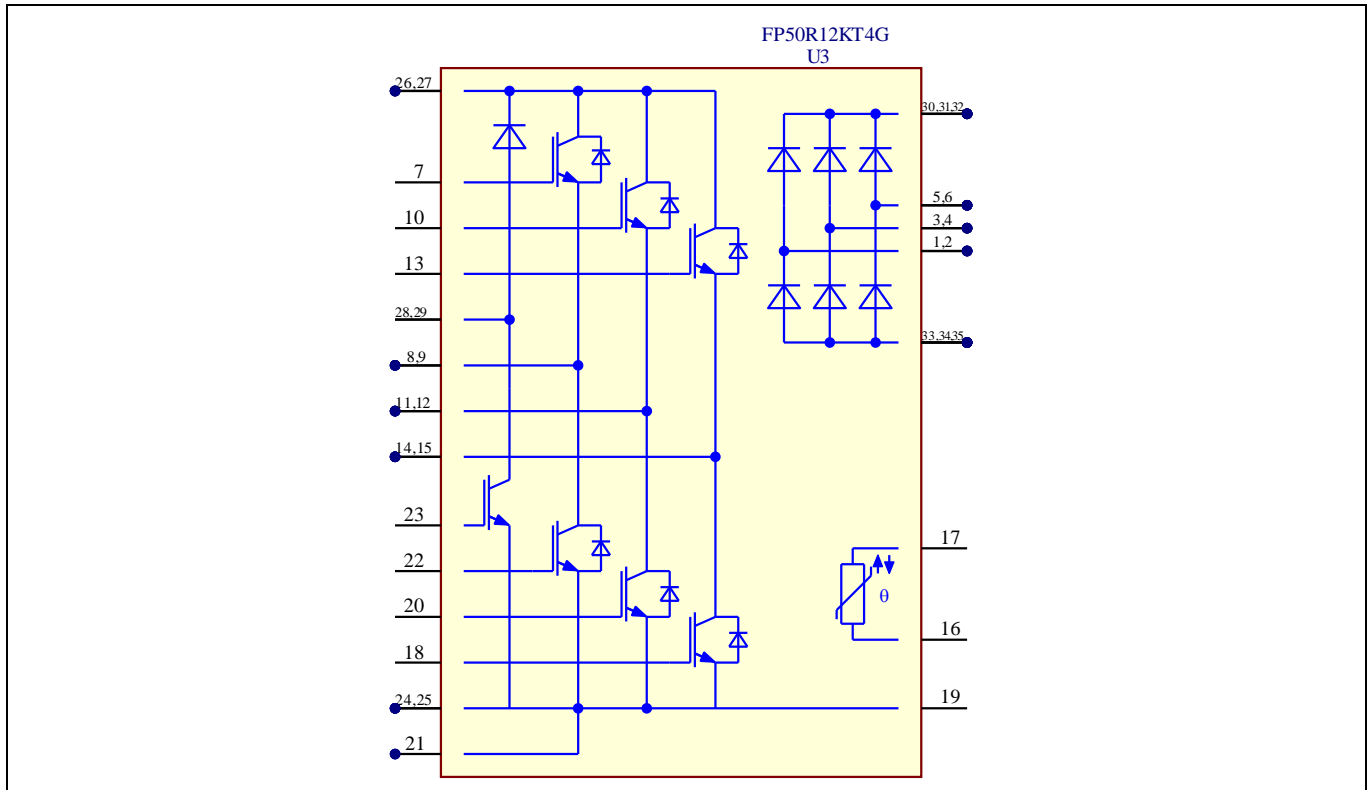


Figure 9 Internal structure of the FP50R12KT4G

2.2.4 Drive circuit with the IR2214SS

There are three half-bridge gate drivers IR2214SS used for the inverter drive. The configuration of the IR2214SS is depicted in Figure 10.

The desaturation protection is a key feature of the IR2214SS. The IGBT switching would cause the overshoot/undershoot at the desaturation detection pins DSH/DSL. It is necessary to clamp the DSH/DSL to the power supply VB/+15 VCC and ground reference VS/COM individually, to prevent IC damage. The clamping diodes should have small leakage current at high temperature, like the BAS16J selected herein.

To suppress the voltage spikes between the VSS and COM caused by the IGBT switching, a small resistor R6 is added between the COM and the low-side IGBT emitter N1. The resistor R5 is needed to balance the gate resistance of both the high-side and low-side drive loops.

The FLT_CLR, SY_FLT, FAULT/SD pins of the three IR2214SS ICs are individually connected together. Any fault reported from one IR2214SS will shut down the other two. The MCU can also control the three gate drivers synchronously.

If the desaturation protection is triggered, the FAULT/SD (pin 5) of IR2214SS will be pulled low and the drive outputs are disabled. There should be an active high pulse at the FLT_CLR (pin 3) to clear the fault and release the IC from protection. On this EVAL-M1-IR2214 board, the users have to press the push-button S1 to re-enable the IC.

The diodes D11, D12 and D15 are all 1200 V rated.

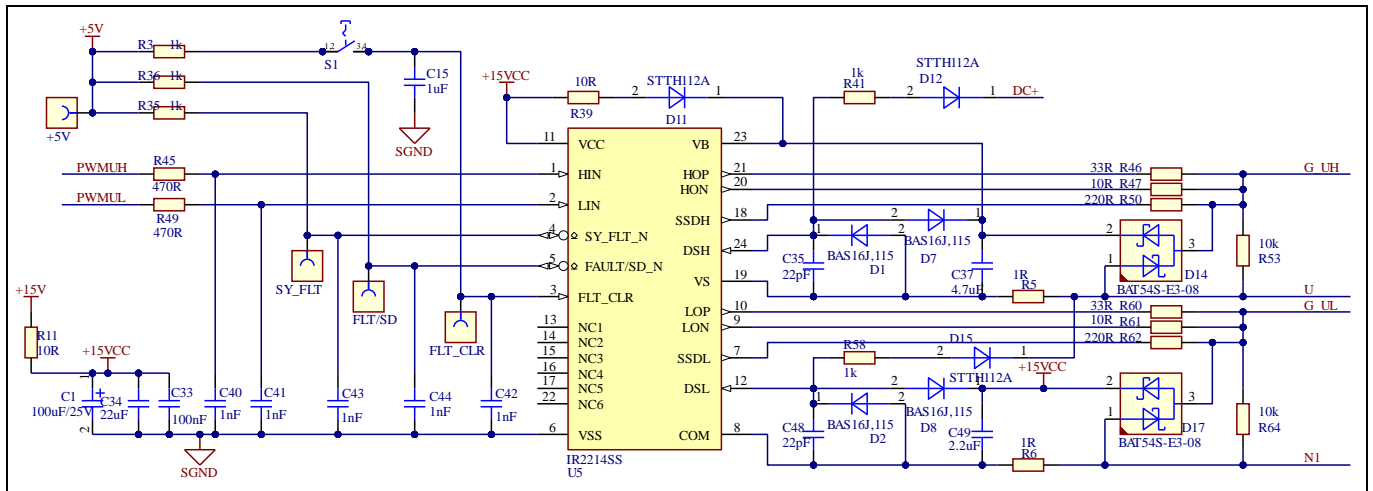


Figure 10 Drive circuit design with the IR2214SS

2.2.5 Current feedback

The current feedback circuit is depicted in Figure 11. The shunt resistor value is 2.5 mΩ by using four 10 mΩ/5 W SMD resistors in parallel.

The current gain is calculated by,

$$IU+ = \frac{R110}{R110 + R109} * 5V + \frac{R96}{R100 + R101 + R102} * \frac{R104}{R104 + R100 + R106} * 2.5mohm * current$$

$$= 2.143 + 39.6 mV/A$$

Note: If entering this result to MCEWizard, the resistor R6 on the EVAL -M1-101T board should be removed (without an extra offset).

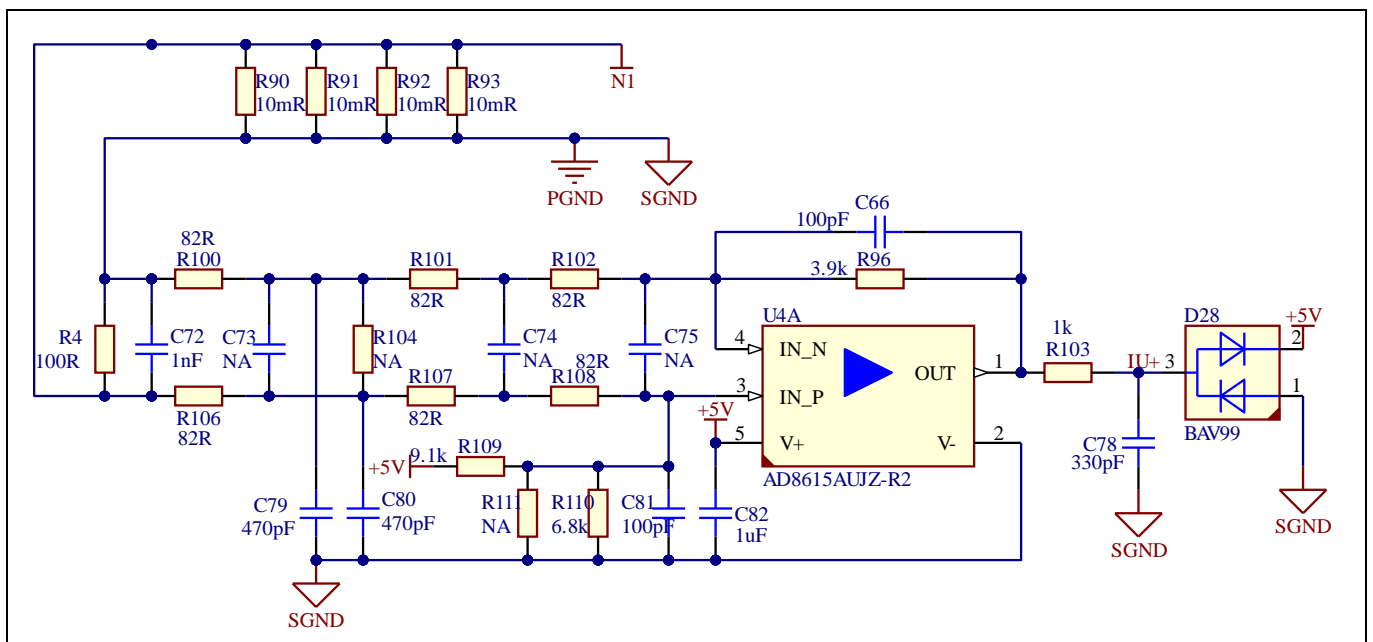


Figure 11 Current feedback circuit

2.2.6 NTC-thermistor configuration

The FP50R12KT4G combines a negative-temperature-coefficient (NTC) thermistor internally. The NTC thermistor-temperature curve is shown in Figure 12.

The NTC-thermistor resistance is 5 k Ω @25 $^{\circ}$ C and 493 Ω @100 $^{\circ}$ C.

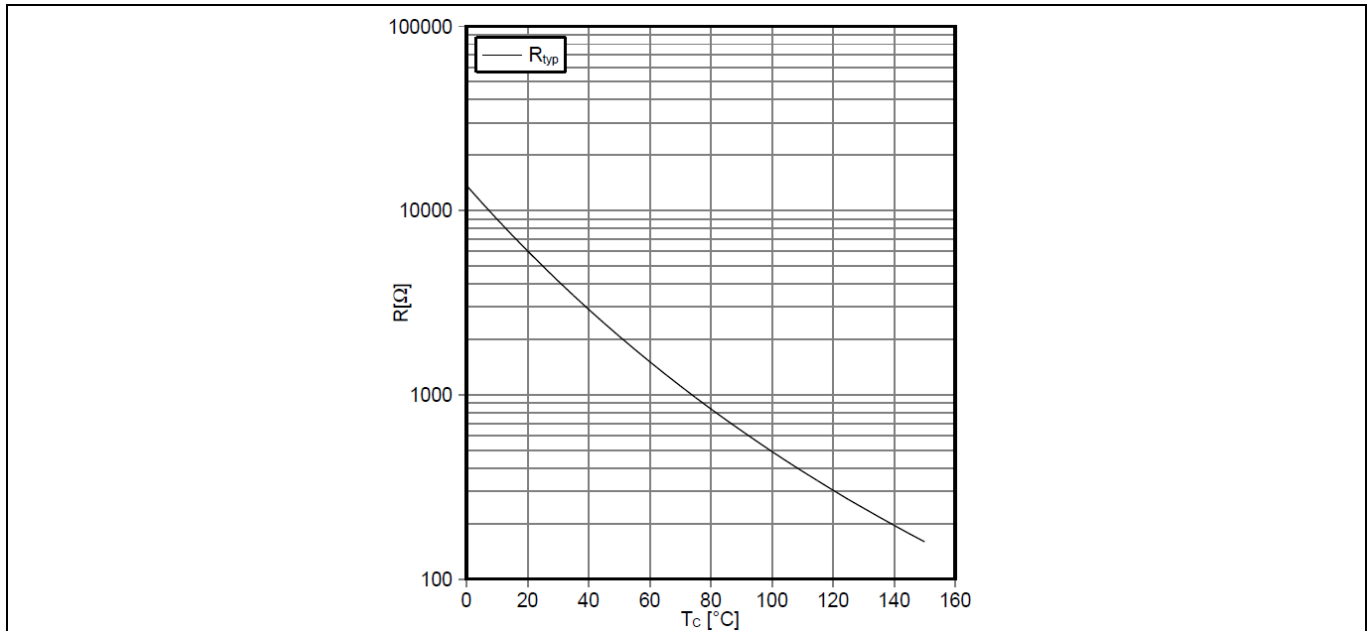


Figure 12 The NTC thermistor-temperature characteristic (typical)

There is a 4.87 k Ω pull-up resistor already located on the EVAL-M1-101T controller board. As the NTC-thermistor configuration in Figure 13, the sensing voltage V_{TH} equals 4.14 V@25 $^{\circ}$ C and 1.84 V@100 $^{\circ}$ C. In MCEWizard the NTC-thermistor over-temperature voltage threshold is set to 1.84 V to protect the PIM from temperatures exceeding 100 $^{\circ}$ C.

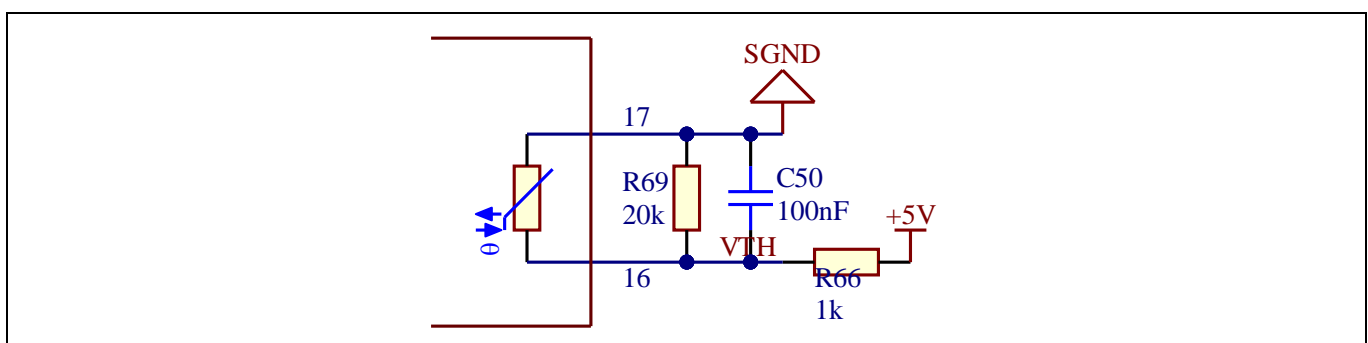


Figure 13 NTC-thermistor configuration

2.2.7 Auxiliary power supply

The auxiliary power supply circuit is located in the daughter board. It adopts the quasi-resonant flyback controller ICE5QSAG and CoolSiCTM 1700 V SiC MOSFET, IMF170R1k0M1, in a TO-263-7 package. The primary ground, and secondary +15 V and +5 V reference grounds are separated in the daughter board, but connected as a same net on the main board.

System and functional description

The controller board power supply is designed to +5 V instead of +3.3 V in order to improve the signal-noise ratio in high-power operations.

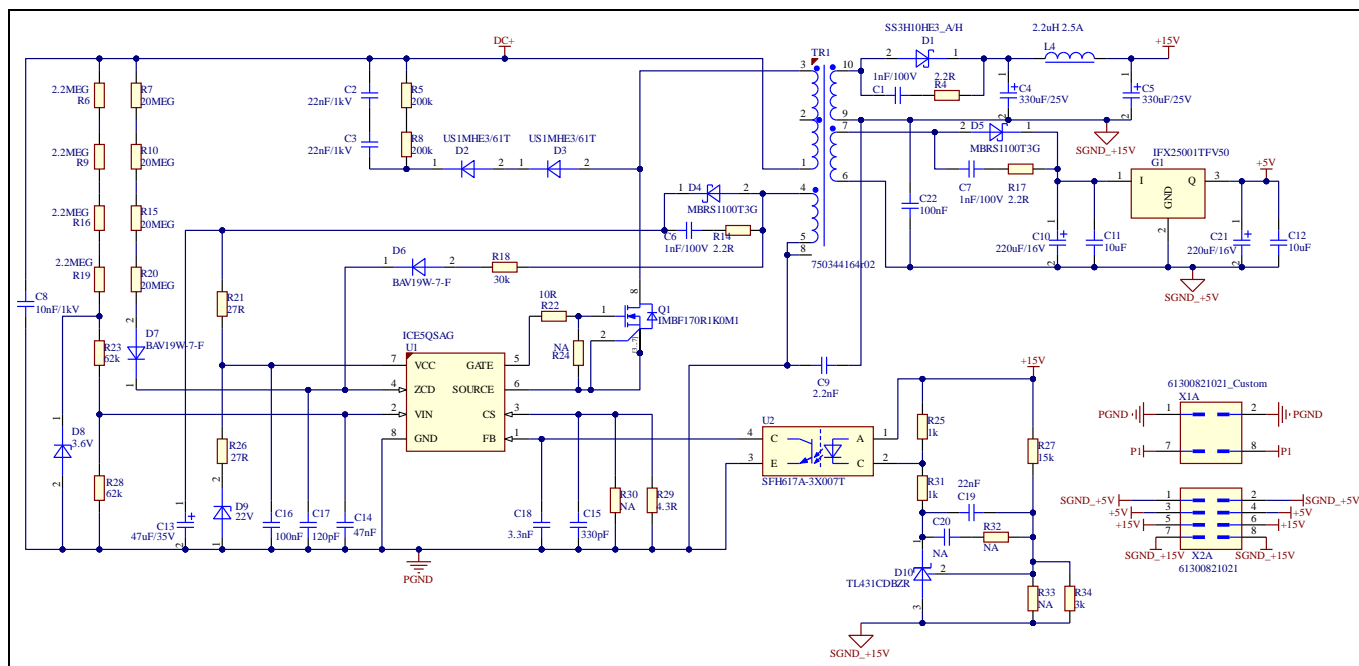


Figure 14 **Auxiliary power supply**

2.3 iMOTION™ development tool and software

The EVAL-M1-IR2214 can run a BLDC motor by connecting with an external controller board EVAL-M1-101T. The users have to properly configure the iMOTION™ development tool and software according to the system and BLDC motor parameters.

The MCEDesigner and MCEWizard as well as the supported files are available for download via the Infineon iMOTION™ website (<http://www.infineon.com/imotion-software>).

2.3.1 MCEWizard setup

The users have to enter the right parameters into the MCEWizard to run a BLDC motor.

The input for basic system configuration is shown in Figure 15. The pulse width modulation (PWM) frequency is set to 8 kHz, which is used widely for driving commercial air-conditioner (CAC) compressors.

The system configuration is shown in Figure 16.

All the necessary inputs for motor and control algorithms are listed in Figure 17.

Note: If using the current sensing data calculated in section 2.2.5 for items 83, 84, 85, the resistor R6 on the EVAL-M1-101T should be removed (no extra offset on the controller board).

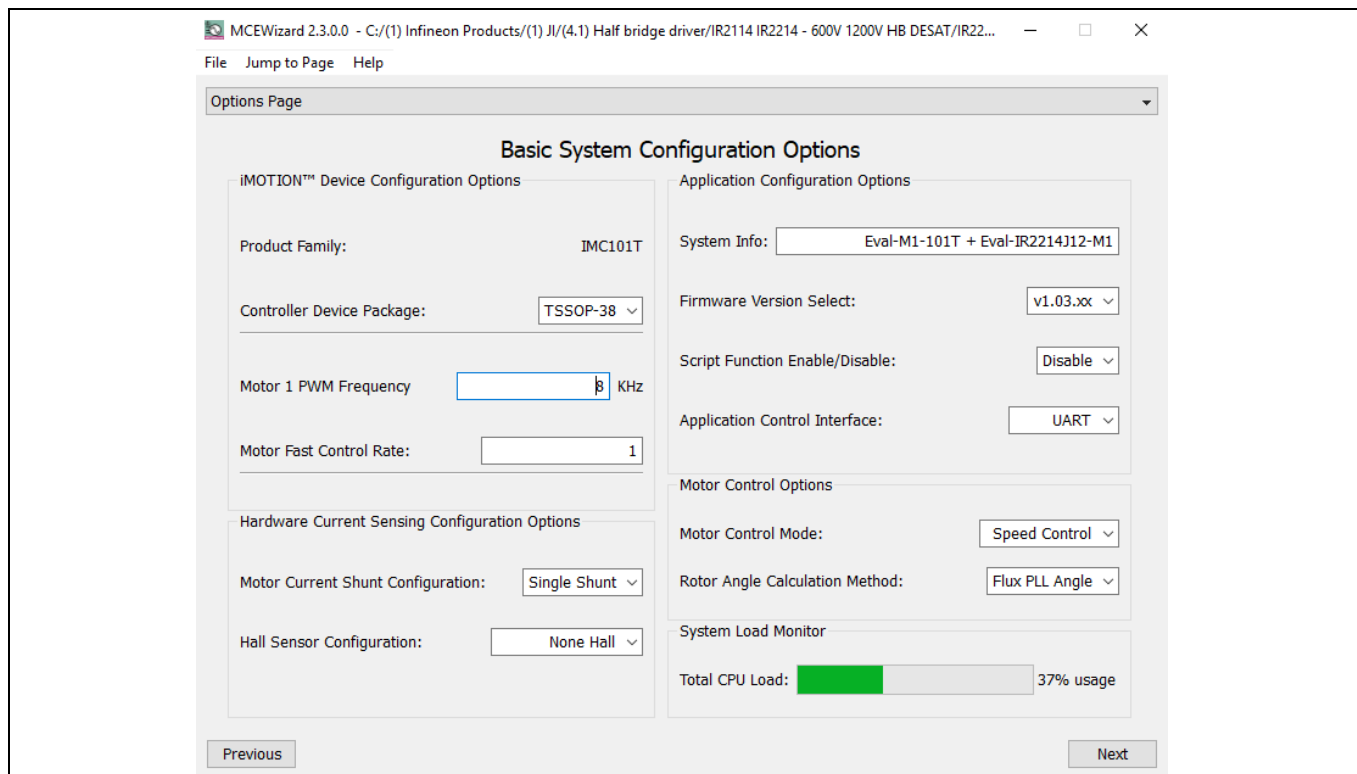


Figure 15 Basic system configuration in MCEWizard

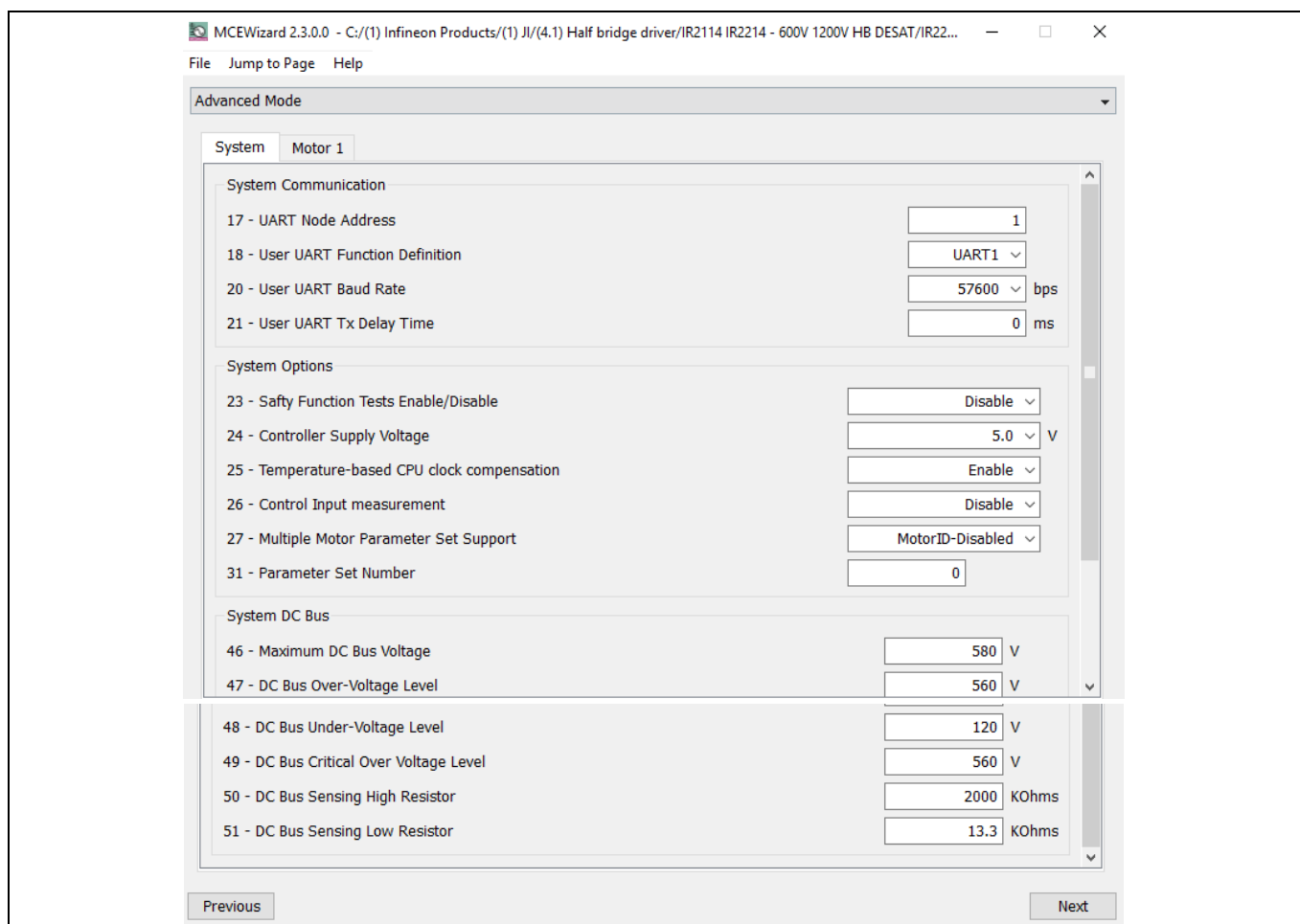


Figure 16 System configuration in MCEWizard

MCEWizard 2.3.0.0 - C:/1) Infineon Products/1) JI/(4.1) Half bridge driver/IR2114 IR2214 - 600V 1200V HB DESAT/IR22...

File Jump to Page Help

Advanced Mode

System Motor 1

Motor 1 Motor Parameters

1 - Motor Model Name	IdenAge_GK6081
2 - Motor Rated Amps	20 Arms
3 - Motor Poles	6
4 - Motor Stator Resistance	0.19 Ohms/phase
5 - Motor Lq Inductance	2.4 mH
6 - Motor Ld Inductance	2.2 mH
7 - Motor Back EMF Constant (Ke)	67.5 V(ln-rms)/krpm
8 - Motor Max RPM	2500 RPM
9 - Minimum Running Speed	100 RPM
10 - Speed Ramp Rate	50 RPM/sec

Motor 1 Startup Setting

11 - Open Loop Speed Ramp Rate (0 = Disable Open Loop Start-up)	50 RPM/sec
12 - Parking Time (0= Disable Parking)	0 sec
13 - Low Speed Threshold	500 RPM

14 - Low Speed Current Limit

20 %

Motor 1 Motor Starting

15 - Initial Angle Sensing

Disable

Motor 1 Application Information

52 - Motoring Current Limit	120 %
53 - Regeneration Current Limit	5 %
54 - Field Weakening Current Limit	0 %
57 - PG Pulse Per Revolution	12 PPR

Motor 1 Regulators

58 - Current Regulator Bandwidth	600 rad/sec
59 - Enable DC Bus Compensation	Enable
60 - Flux Estimator Time Constant	15 msec
61 - Speed Feedback Filter Time Constant	0.2 msec
62 - Speed Regulator Proportional Gain	0.25
63 - Speed Regulator Integral Gain	1.4 rad/s

Motor 1 Fault Conditions

68 - Enable DC Bus Overvoltage Fault	Enable
69 - Enable DC Bus Undervoltage Fault	Enable
70 - Flux PLL Out of Control Fault	Disable
71 - Enable Over Temperature Fault	Enable
72 - NTC Over-temperature Voltage Threshold	1.84 V
73 - Rotor lock Protection Fault	10-Sec
74 - Enable Phase Loss Fault	Disable

Motor 1 PWM Information

75 - Over Modulation	Enable
76 - Motor PWM Type	3Phase_Only
78 - Inverter Dead Time	1 µsec

Motor 1 Gate Drive Hardware Setup

80 - GateSense Low-Side Devices	High is TRUE
81 - GateSense High-Side Devices	High is TRUE

EVAL-M1-IR2214 User Guide

1200 V junction-isolation gate driver IR2214SS evaluation board

System and functional description

82 - Total Bootstrap Cap Charge Time	10 msec
Motor 1 Current Feedback and Sample Timing	
83 - Motor 1 Current Input Scaling	39.6 mV/A
84 - Internal Current Feedback Amplifier Gain	1
85 - Motor 1 Current Input to ADC Offset Voltage	2143 mV
86 - Gate Driver Propagation Delay	0.3 µsec
87 - Type of Single Shunt Current Sensing	PhsShift
88 - Enable Low noise Phase Shift Current Sensing	Disable
90 - Phase Shift Window Size	3.7 µsec
Motor 1 Gatekill Setup	
91 - Gatekill Input Source	Both
93 - Overcurrent Trip Level for Internal GateKill Comparator	50 A
94 - Gatekill Filter Time Constant	1 µsec
Motor 1 Catch Spin Setup	
95 - Catch Spin before Start	Disable

Figure 17 Motor and control algorithm configuration in MCEWizard

2.3.2 MCEDesigner setup

The MCEDesigner is a user interface to access or debug the controller board, see Figure 18.

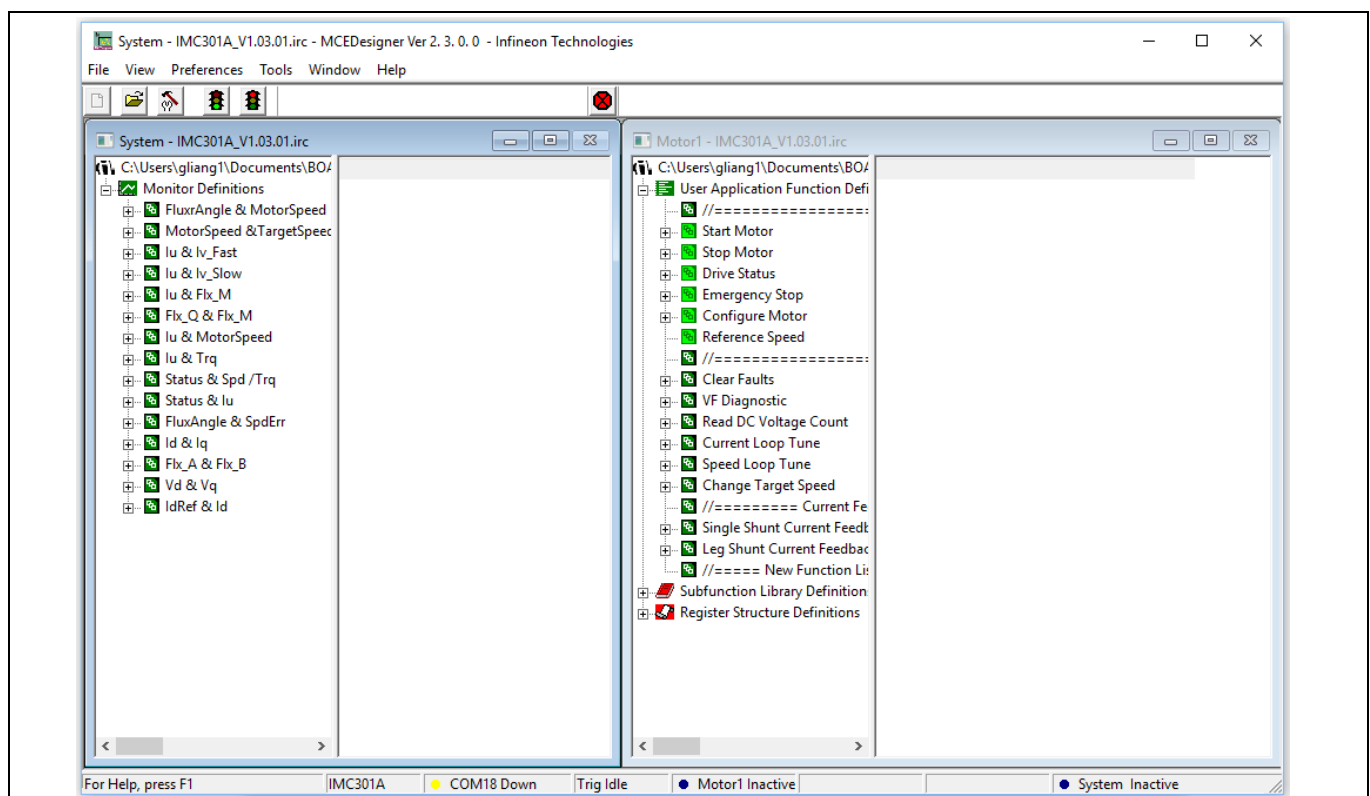


Figure 18 MCEDesigner main display for EVAL-M1-101T

EVAL-M1-IR2214 User Guide

1200 V junction-isolation gate driver IR2214SS evaluation board

System design

3 System design

3.1 Schematics

The schematics of the EVAL-M1-IR2214 are shown in Figure 19 and Figure 20, respectively.

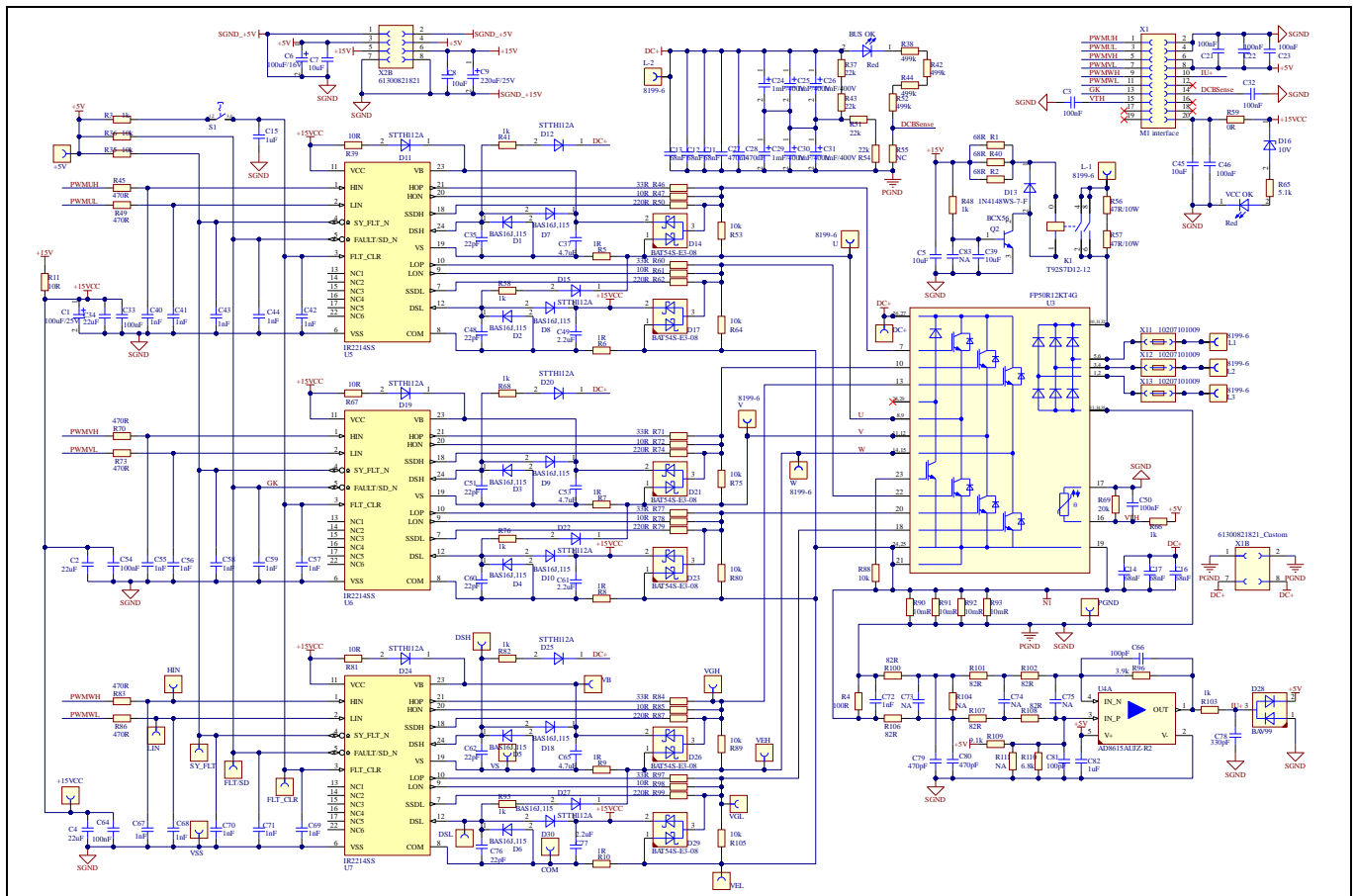


Figure 19 Power circuitry of the EVAL-M1-IR2214

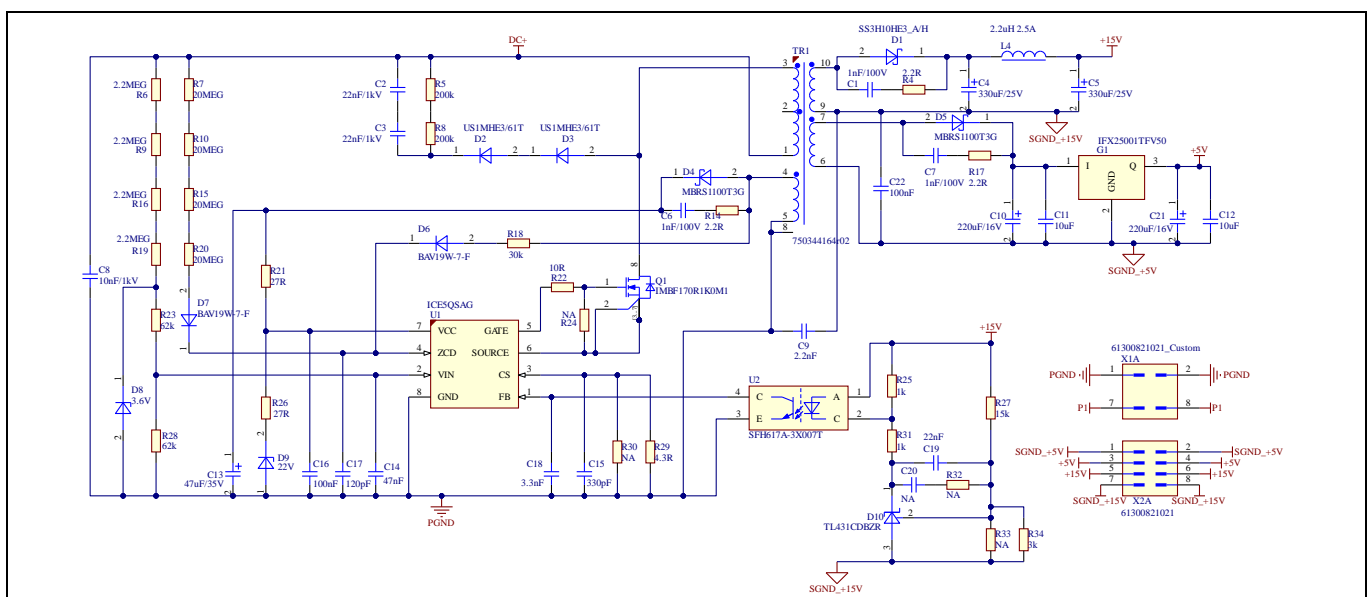


Figure 20 Auxiliary power supply circuitry of the EVAL-M1-IR2214

System design

3.2 Layout

3.2.1 Layout details

The detailed layouts of the EVAL-M1-IR2214 are shown in Figure 21 to Figure 24.

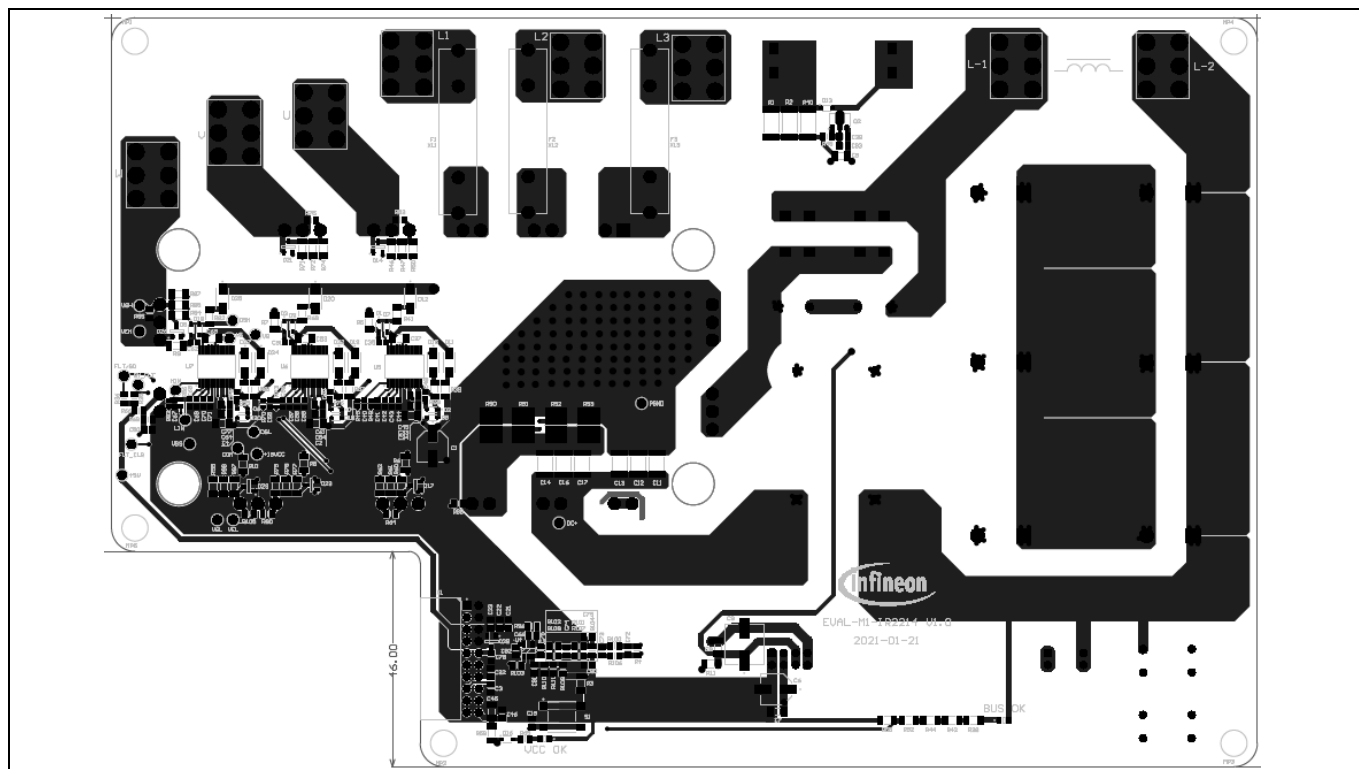


Figure 21 Power circuitry layout of the EVAL-M1-IR2214 – top view

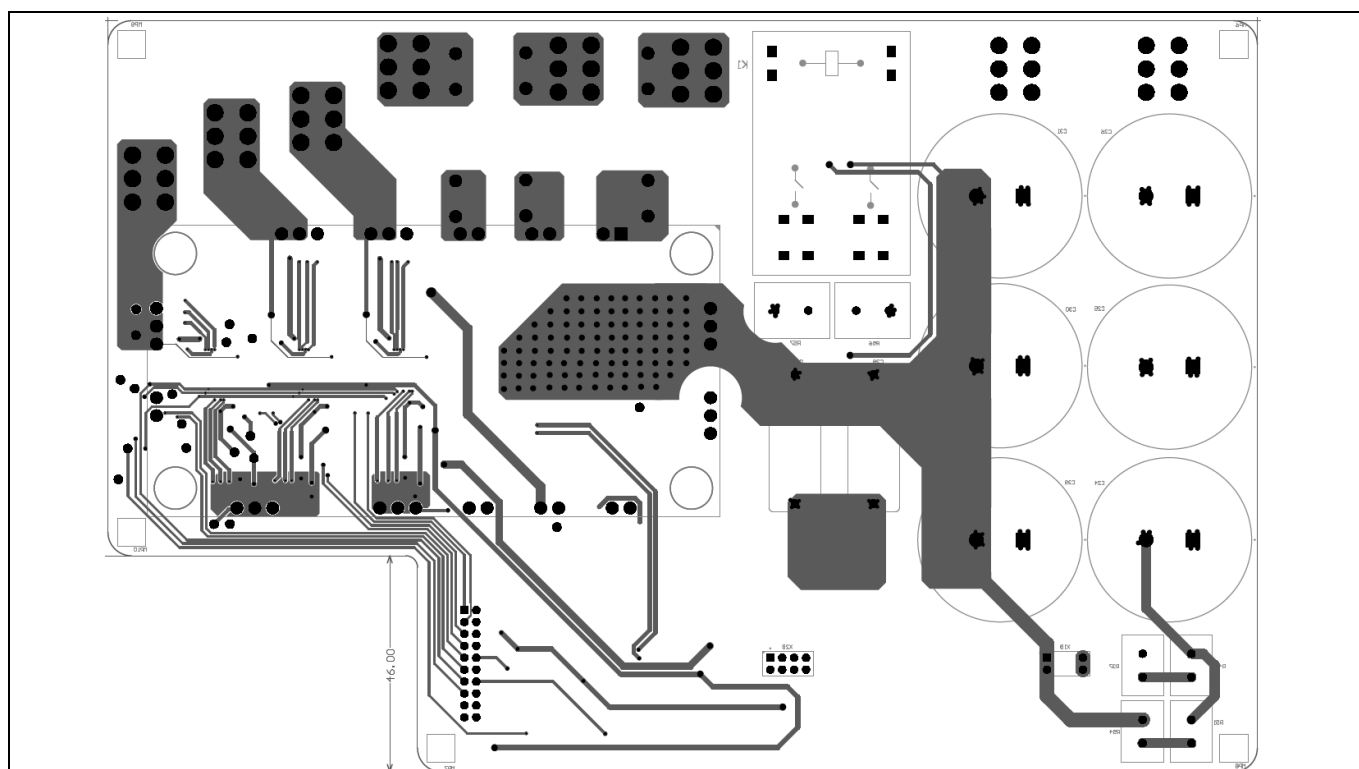


Figure 22 Power circuitry layout of the EVAL-M1-IR2214 – bottom view

System design

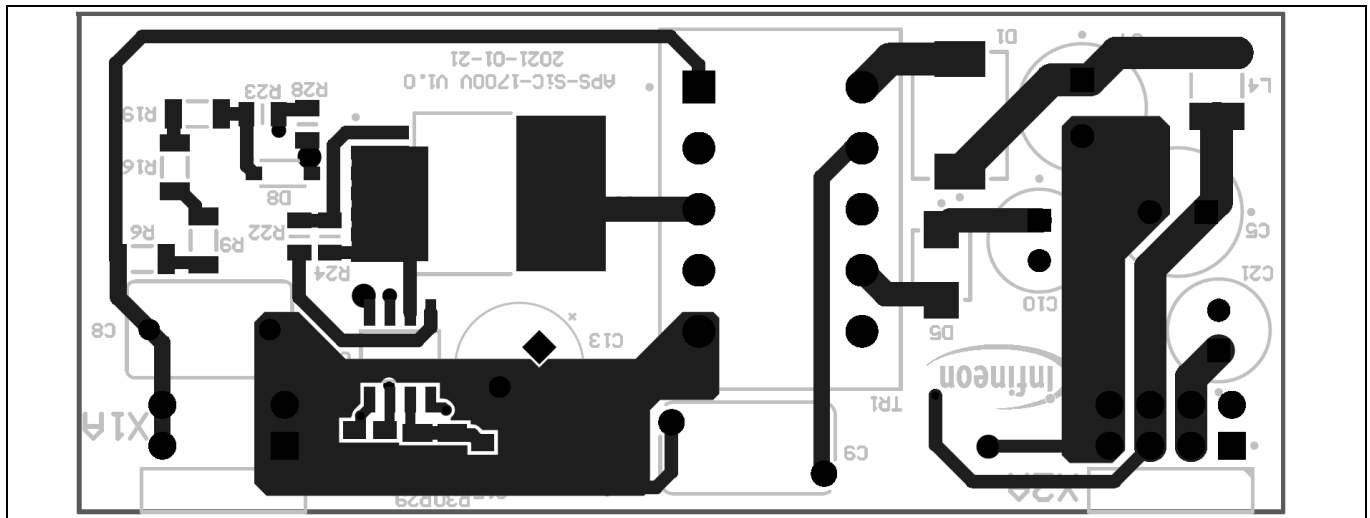


Figure 23 Auxiliary power supply circuitry layout of the EVAL-M1-IR2214 – top view

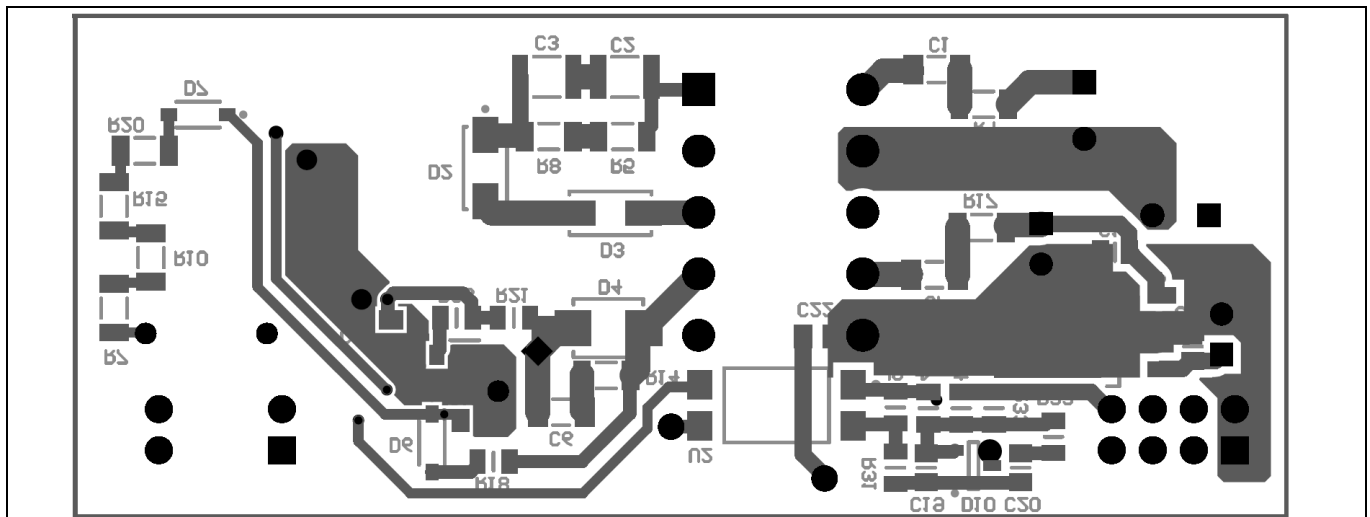


Figure 24 Auxiliary power supply circuitry layout of the EVAL-M1-IR2214 – bottom view

3.2.2 Layout guidelines

Some basic layout guidelines are listed as follows:

- The V_{CC} and V_{BS} bypass capacitors should be close to the IC
- The drive loop should be as small as possible
- The loop of VSS and COM should be as small as possible by connecting the VSS and COM directly at the shunt-resistor terminals
- The two current sensing traces should be started from the shunt terminals and placed close to each other.
- The clearance and creepage should be enough for the 540 V_{DC} bus voltage. In this layout the creepage is set to 5.3 mm which is compliant with the IR2214SS

System design

3.3 Bill of material

The complete bill of material is available on the download section of the Infineon homepage. A log-in is required to download this material.

Table 3 lists the important components used in the EVAL-M1-IR2214.

Table 3 BOM of the most important/critical parts

No.	Ref designator	Description	Manufacturer	Manufacturer P/N
1	U5, U6, U7	1200 V half-bridge gate driver with desaturation protection	Infineon Technologies	IR2214SS
2	U3	1200 V/50 A EconoPIM™3 module	Infineon Technologies	FP50R12KT4G
3	U1	Quasi-resonant controller	Infineon Technologies	ICE5QSAG
4	Q1	1700 V/1 Ω SiC MOSFET in TO263-7 package	Infineon Technologies	IMBF170R1K0M1
5	G1	5 V/400 mA linear voltage regulator	Infineon Technologies	IFX25001TFV50
6	R90, R91, R92, R93	10 m Ω /5 W/1% SMD shunt resistor	Isabellenhuetten	SMT-R010-1.0
7	C24, C25, C26, C29, C30, C31	400 V/1000 μ F/35*60 mm/pitch 10 mm Al E-capacitor	Würth	861021386035
8	U4A	20 MHz rail-to-rail operational amplifier	ADI	AD8615AUJZ-R2
9	RLY1	Two-pole 30 A/600 V _{AC} PCB mount relay	TE	T92S7D12-12
10	D11, D12, D19, D20, D24, D25	1200 V ultrafast rectifier	ST	STTH112A
11	D1, D2, D3, D4, D5, D6, D7, D8, D9, D10, D18, D30	75 V/250 mA high-speed switching diode	NXP	BAS16J
12	R37, R43, R51, R54	22 k Ω /5 W/5% vertical resistor	Yageo	SQM500JB-22K

3.4 Connector details

Table 4 Connectors

PIN	Label	Function
	L1	L1-phase of the power mains
	L2	L2-phase of the power mains
	L3	L3-phase of the power mains
	U	U phase-out to the motor
	V	V phase-out to the motor
	W	W phase-out to the motor
	J1	iMOTION™ MADK-M1 20-pin interface connector

4 System performance

4.1 Test results running a BLDC motor

The board is tested while running a BLDC motor as in the setup shown in Figure 25.

Test condition:

- Input: 380 Vac
- Phase-out current: 20 A_{rms}
- Room temperature
- BLDC motor: GK6081-6AC31-FE, I_o=20 A, U_i=135 V, test at speed=1200 r/min and 40 Nm
- Heatsink with forced-air cooling for the PIM

Note: After power-on, the pin 5 (FAULT/SD) of IR2214SS is initially in low state, thus disabling the IR2214SS drive output. The users have to press the push-button S1 on the board for 1 second and then release it. This step is necessary to clear the fault status and re-enable the IR2214SS.

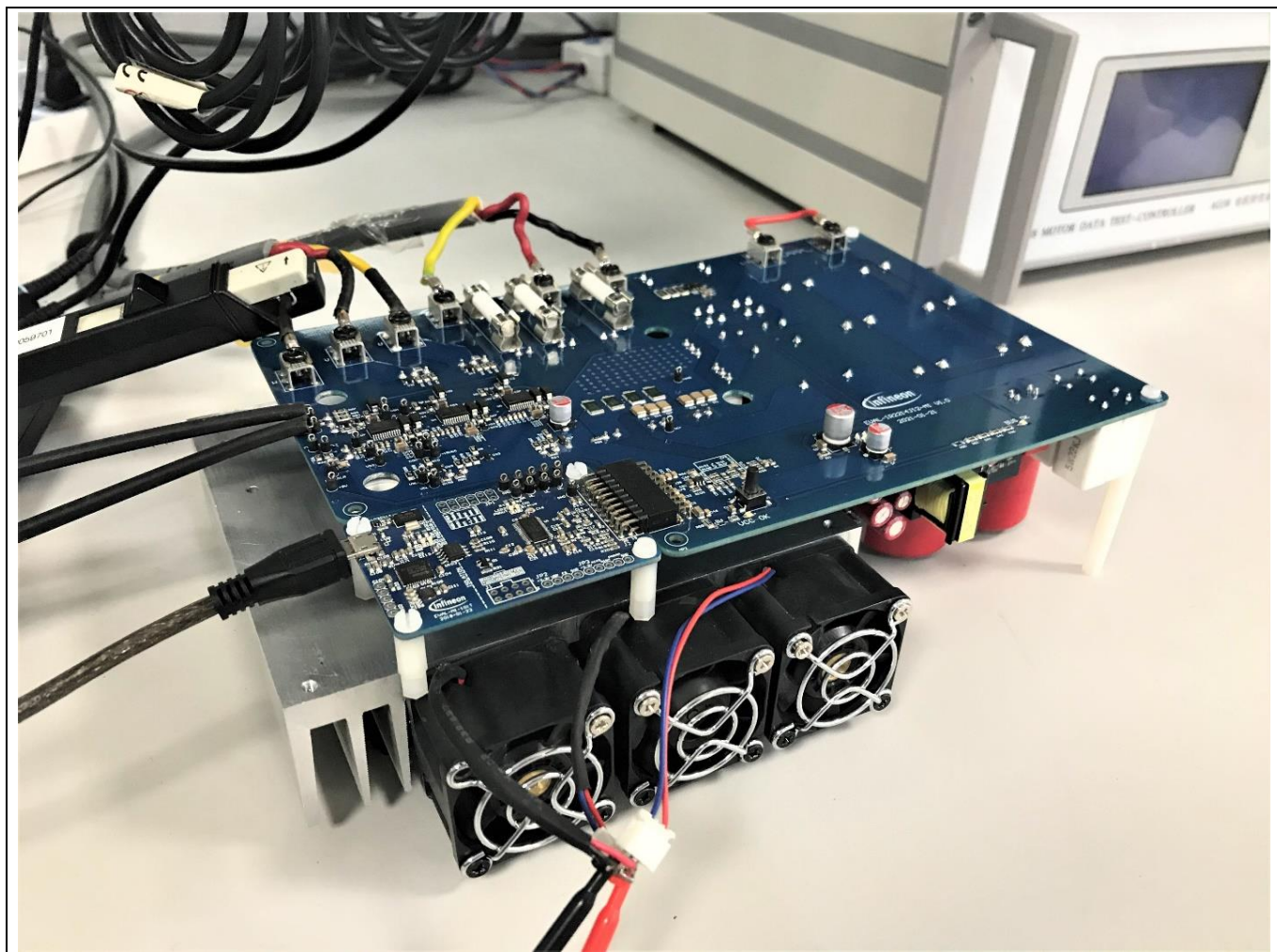


Figure 25 System setup for running a BLDC motor

EVAL-M1-IR2214 User Guide

1200 V junction-isolation gate driver IR2214SS evaluation board

System performance

Figure 26 shows the waveform when running a BLDC motor. The gate drive signals (V_{GE_HS} , V_{GE_LS}) indicate that no cross-conduction occurred. There are undershoots measured at the low-side desaturation detection pin 'DSL' to 'COM' (V_{DSL_COM}) while the low-side IGBT is turning ON, however, the undershoots are still within the -3 V limitation in the datasheet.

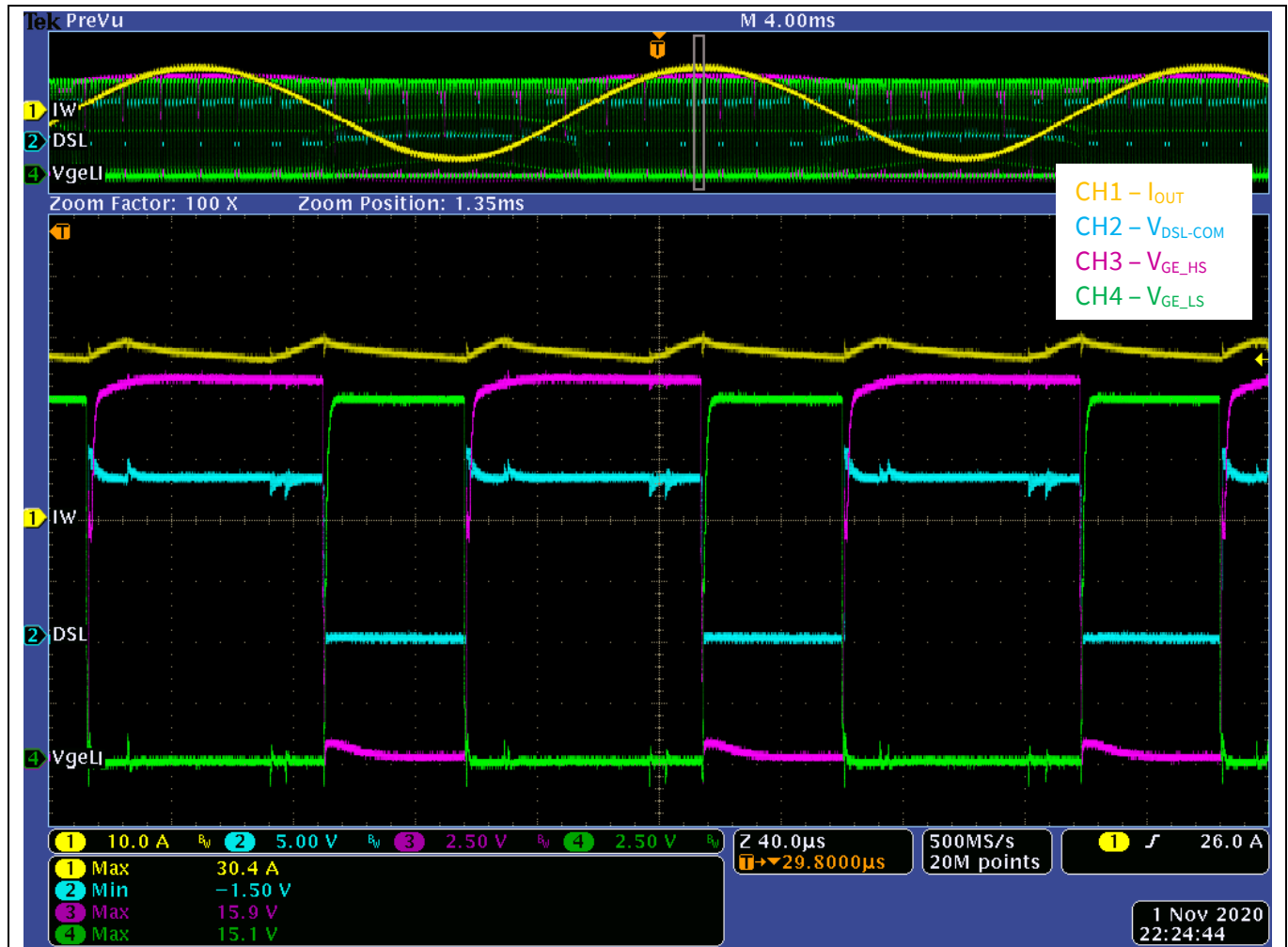


Figure 26 Drive signal waveforms

System performance

The desaturation protection is a remarkable feature of the IR2214SS. The W-phase, high-side IGBT is shorted by a short link to verify the short-circuit protection.

From Figure 27, once the desaturation is detected, the gate signal V_{GE_LS} starts to turn off in less than 3 μs . The turn off event is very soft due to the soft over-current shutdown function of the driver. The smooth turn-off prevents the transistor from destruction by over-voltage. The SY_FLT is also pulled low to report a failure of the desaturation which can be read by the other two IR2214SS.

Note: If desaturation is triggered, the users have to press the push-button S1 to re-enable the IR2214SS.

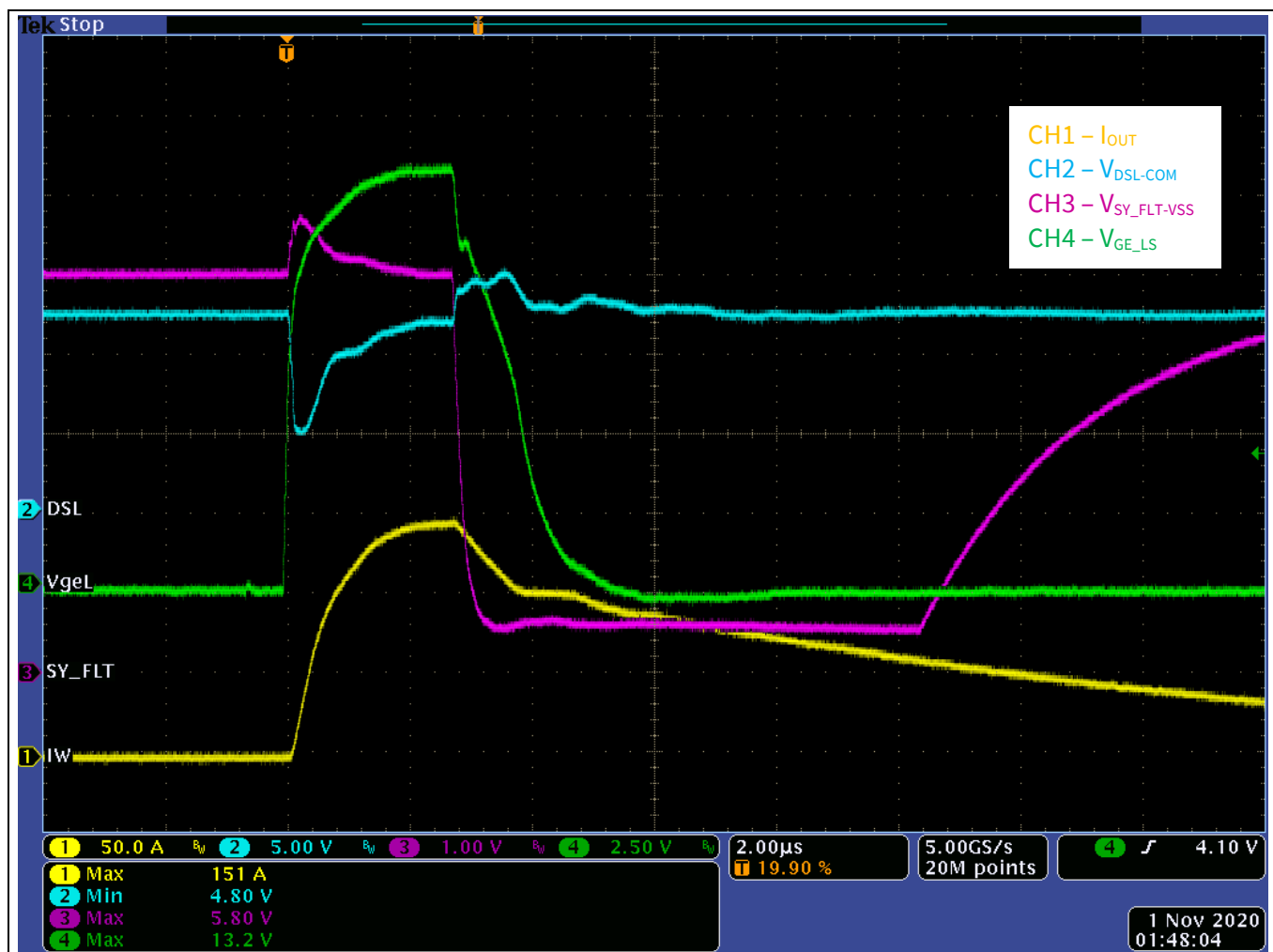


Figure 27 Short-circuit protection

System performance

4.2 Test results of the double-pulse test

As in the setup illustrated in section 2.1.2, the double-pulse test is performed to evaluate the board exceeding a 10 kW power rating in a real application.

Test condition:

- Bus voltage: 600 Vdc
- Switching current: 50 A
- Inductor: 200 μ H

Figure 28 shows that the negative V_S and VSS transient referenced to COM are still in the IR2214SS safe-operation area.

Note: 1. To test the worst negative V_S and VSS transient, the inductor is connected between the W-phase mid-point (connector 'W') and ground PGND (test point 'PGND') on the board, and the double-pulse is entered in the HIN.

2. An isolated power supply +15 V should be added externally to power the V_{BS} (connects to the test points 'VB' and 'VS')

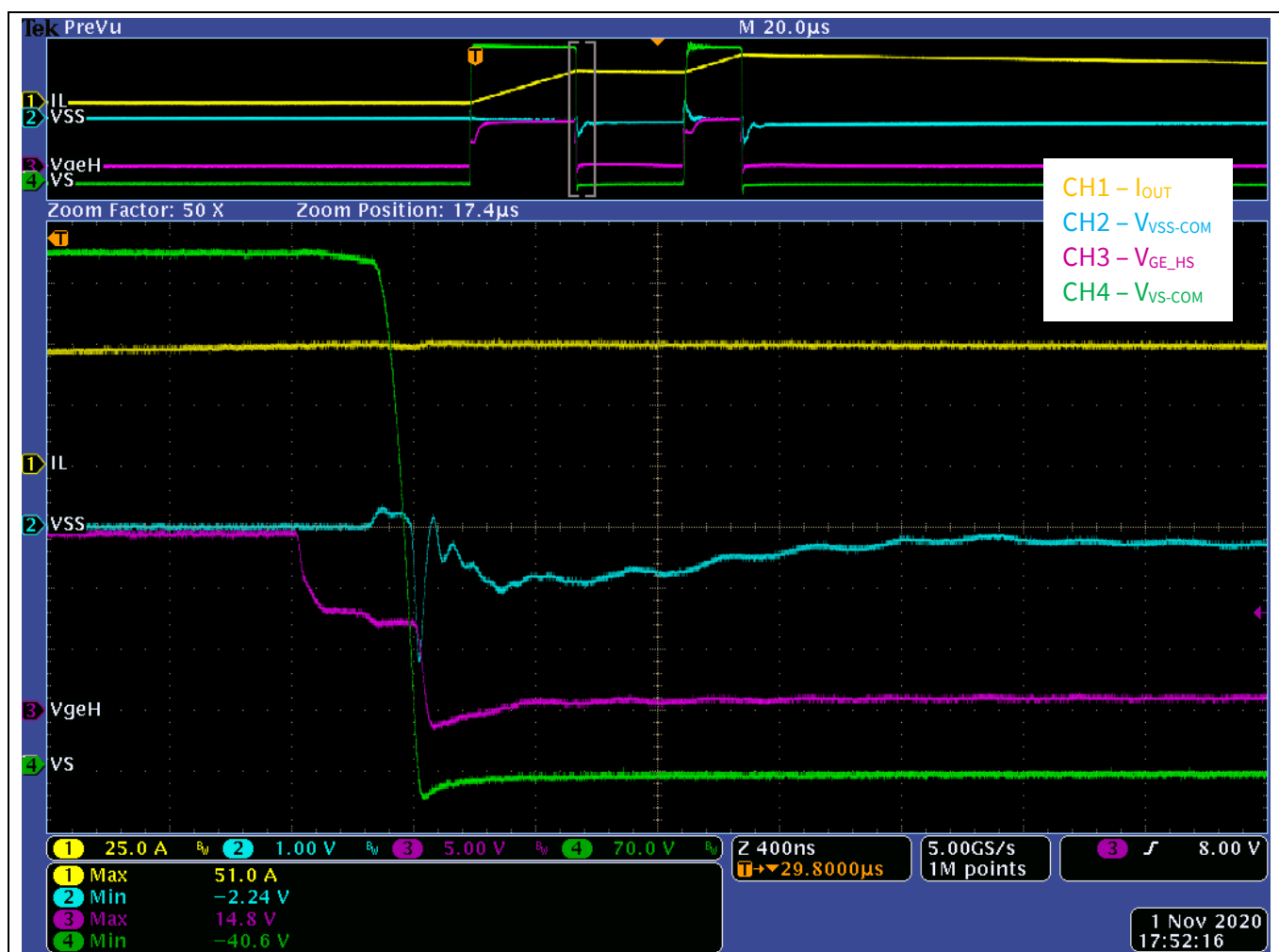


Figure 28 Negative V_S and VSS transient at 50 A switching current

5 References and appendices

5.1 Abbreviations and definitions

Table 5 Abbreviations

Abbreviation	Meaning
IC	Integrated circuit
IGBT	Insulated gate bipolar transistor
DC	Direct current
AC	Alternating current
BLDC	Brushless direct current
PIM	Power integrated module
SiC	Silicon carbide
PWM	Pulse width modulation
NTC	Negative temperature coefficient
EVAL	Evaluation board

5.2 References

- [1] Infineon Technologies AG. Datasheet of IR2214SS (2020) V1.1 [IR2214SS - Infineon Technologies](#)
- [2] Infineon Technologies AG. Datasheet of FP50R12KT4G (2013) V3.0 [FP50R12KT4G | 1200 V, 50 A PIM three phase input rectifier IGBT module - Infineon Technologies](#)
- [3] Infineon Technologies AG. User manual of EVAL-M1-101T (2018) V1.6 [EVAL-M1-101T - Infineon Technologies](#)
- [4] Infineon Technologies AG. Application note: Managing transients in control IC driven power stages (2017) V1.0 [Managing Transients in Control IC Driven Power Stages \(infineon.com\)](#)
- [5] Infineon Technologies AG. iMOTION™ - MCE - Software Reference Manual (2020) v1.3 [iMOTION™ Motion Control Engine \(infineon.com\)](#)
- [6] Infineon Technologies AG. MCEWizard User Guide (2019) V2.3.0.0 [Semiconductor & System Solutions - Infineon Technologies](#)
- [7] Infineon Technologies AG. MCEDesigner Application Guide (2019) V2.3.0.0 [Semiconductor & System Solutions - Infineon Technologies](#)

Revision history

Document version	Date of release	Description of changes
1.0	2021-03-22	First release

Trademarks

All referenced product or service names and trademarks are the property of their respective owners.

Edition 2021-03-22

Published by

Infineon Technologies AG

81726 Munich, Germany

© 2021 Infineon Technologies AG.

All Rights Reserved.

Do you have a question about this document?

Email: erratum@infineon.com

Document reference

UG-2021-05

For further information on the product, technology, delivery terms and conditions and prices please contact your nearest Infineon Technologies office (www.infineon.com).

WARNINGS

Due to technical requirements products may contain dangerous substances. For information on the types in question please contact your nearest Infineon Technologies office.

Except as otherwise explicitly approved by Infineon Technologies in a written document signed by authorized representatives of Infineon Technologies, Infineon Technologies' products may not be used in any applications where a failure of the product or any consequences of the use thereof can reasonably be expected to result in personal injury.